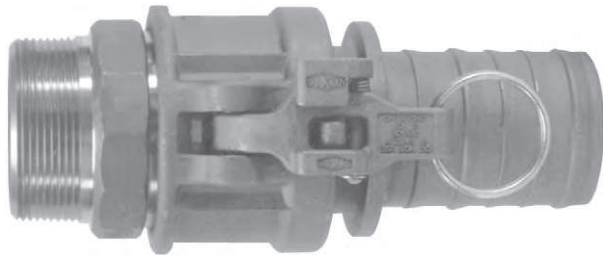


## EZ Boss-Lock

No more fumbling with clamps, wire, clips or pins.  
Just close the handles and the locking  
*mechanism is engaged.*

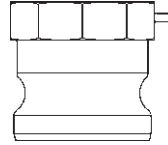


Unlike other safety couplings . . .

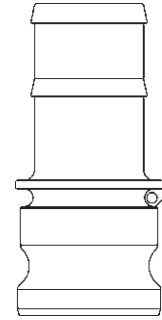
- *The EZ Boss-Lock is extremely easy to open!!!*  
The release lever is under your thumb when you want to open the fitting. Ergonomic.
- *The EZ Boss-Lock is resistant to accidental disconnection when being dragged.* The release lever opens in the direction opposite to the cam arm, so movements that tend to open the release lever also tend to close the cam arm!!!
- *The EZ Boss-Lock alerts you if it is not properly engaged.* If the rotating lever is not flush with the handle, it is not properly engaged.
- *The EZ Boss-Lock has no sliding pins to jam.*  
The EZ Boss-Lock's rotating action helps keep the locking device free of debris.
- *The EZ Boss-Lock has no sliding pins to pop open.*  
The EZ Boss-Lock is designed to protect critical parts from impact and to withstand rugged use.
- *The EZ Boss-Lock can be supplied with special shanks custom suited to your needs.* The EZ Boss-Lock is available with swaged and PF shank designs for hard to couple chemical hoses.
- *The EZ Boss-Lock cam arm assemblies are made of investment cast stainless steel with plated carbon steel pull rings.*
- *The EZ Boss-Lock is easier to insert into the hose tubes on tank trucks, and easier to use in restricted spaces.* This is due to the smaller maximum OD and a more snag free exterior.
- *The EZ Boss-Lock cam arm assemblies can be retrofitted onto undamaged stainless steel Boss-Lock.* This allows you to protect your investment in stainless steel Boss-Lock couplings while you upgrade.
- *The EZ Boss-Lock is made in the USA.*

## Cam and Groove Line Drawings

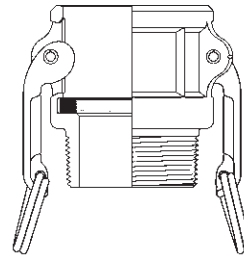
Line drawings are representative of the Dixon line of cam and groove.



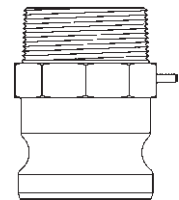
**Type A**  
male adapter x female NPT



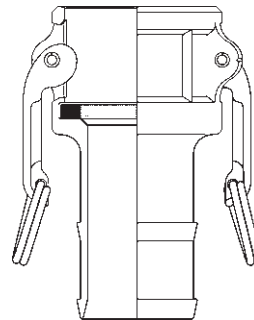
**Type E**  
male adapter x hose shank



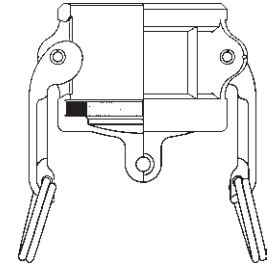
**Type B**  
female coupler x male NPT



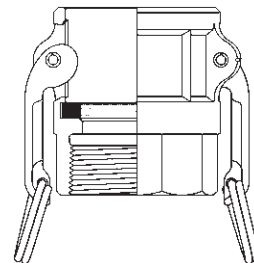
**Type F**  
male adapter x male NPT



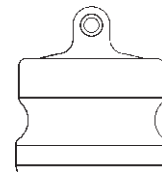
**Type C**  
female coupler x hose shank



**Type DC \***  
dust cap



**Type D**  
female coupler x female NPT



**Type DP \***  
dust plug

\* Dust caps and dust plugs are **not** to be used in pressure applications for safety and environmental reasons.

**SAFETY**  
ALERT

Warning !

Under no circumstances should cam and groove couplings be used for compressed air or steam service!

**SAFETY**  
ALERT

## Dixon / Boss-Lock Type A Adapters



female NPT x male adapter

Size	356T6 Aluminum		Aluminum Hard Coat		Brass	
	Part #	Price/E	Part #	Price/E	Part #	Price/E
1/2"	<b>50-A-AL</b> <sup>2</sup>	<b>\$9.75</b>	---	---	<b>50-A-BR</b>	<b>\$17.10</b>
3/4" x 1/2"	<b>7550-A-AL</b> <sup>2</sup>	<b>14.85</b>	---	---	<b>7550-A-BR</b>	<b>33.00</b>
3/4"	<b>75-A-AL</b> <sup>2</sup>	<b>9.75</b>	---	---	<b>75-A-BR</b>	<b>20.05</b>
1"	<b>100-A-AL</b> <sup>2</sup>	<b>11.50</b>	---	---	<b>100-A-BR</b>	<b>22.00</b>
1 1/4"	<b>125-A-AL</b>	<b>15.25</b>	---	---	<b>125-A-BR</b>	<b>39.95</b>
1 1/2"	<b>150-A-AL</b>	<b>16.25</b>	<b>150-A-ALH</b>	<b>\$30.30</b>	<b>150-A-BR</b>	<b>41.25</b>
2"	<b>200-A-AL</b>	<b>17.60</b>	<b>200-A-ALH</b>	<b>34.60</b>	<b>200-A-BR</b>	<b>51.95</b>
2 1/2"	<b>250-A-AL</b>	<b>27.00</b>	---	---	<b>250-A-BR</b>	<b>91.80</b>
3"	<b>300-A-AL</b>	<b>27.95</b>	<b>300-A-ALH</b>	<b>47.00</b>	<b>300-A-BR</b>	<b>106.50</b>
4"	<b>400-A-AL</b>	<b>62.80</b>	<b>400-A-ALH</b>	<b>97.00</b>	<b>400-A-BR</b>	<b>182.00</b>
5"	<b>500-A-AL</b>	<b>102.00</b>	---	---	<b>500-A-BR</b>	<b>298.90</b>
6"	<b>600-A-AL</b>	<b>122.80</b>	<b>600-A-ALH</b>	<b>188.00</b>	<b>600-A-BR</b>	<b>397.00</b>
8" DIX	<b>800-A-AL</b> <sup>1</sup>	<b>341.25</b>	---	---	---	---
8" BL	<b>801-A-AL</b> <sup>1</sup>	<b>357.95</b>	---	---	---	---

**SAFETY ALERT** <sup>1</sup> Dixon and Boss-Lock cam and groove couplings *do not interchange in the 8" size.*

<sup>2</sup> made from 6061-T6 aluminum

• Pressure rating is based on the seal of the mating part. See ratings on page 16.

## Dixon / Boss-Lock Type E Adapters



male adapter x hose shank

Size	356T6 Aluminum		Aluminum Hard Coat		Brass	
	Part #	Price/E	Part #	Price/E	Part #	Price/E
1/2"	<b>50-E-AL</b>	<b>\$13.90</b>	---	---	<b>50-E-BR</b>	<b>\$25.50</b>
3/4" x 1/2"	<b>7550-E-AL</b>	<b>11.60</b>	---	---	---	---
3/4"	<b>75-E-AL</b>	<b>11.95</b>	---	---	<b>75-E-BR</b>	<b>26.00</b>
1"	<b>100-E-AL</b>	<b>12.50</b>	---	---	<b>100-E-BR</b>	<b>36.00</b>
1 1/4"	<b>125-E-AL</b>	<b>16.70</b>	---	---	<b>125-E-BR</b>	<b>48.75</b>
1 1/2"	<b>150-E-AL</b>	<b>17.55</b>	<b>150-E-ALH</b>	<b>\$33.00</b>	<b>150-E-BR</b>	<b>55.00</b>
2"	<b>200-E-AL</b>	<b>21.40</b>	<b>200-E-ALH</b>	<b>39.30</b>	<b>200-E-BR</b>	<b>76.00</b>
2 1/2"	<b>250-E-AL</b>	<b>32.70</b>	---	---	<b>250-E-BR</b>	<b>113.00</b>
3"	<b>300-E-AL</b>	<b>35.25</b>	<b>300-E-ALH</b>	<b>60.75</b>	<b>300-E-BR</b>	<b>127.00</b>
4"	<b>400-E-AL</b>	<b>68.90</b>	<b>400-E-ALH</b>	<b>105.00</b>	<b>400-E-BR</b>	<b>219.95</b>
5"	<b>500-E-AL</b>	<b>107.00</b>	---	---	---	---
6"	<b>600-E-AL</b>	<b>135.90</b>	<b>600-E-ALH</b>	<b>204.00</b>	<b>600-E-BR</b>	<b>530.00</b>
8" DIX	<b>800-E-AL</b> <sup>1</sup>	<b>567.00</b>	---	---	---	---
8" BL	<b>801-E-AL</b> <sup>1</sup>	<b>584.50</b>	---	---	---	---

**SAFETY ALERT** <sup>1</sup> Dixon and Boss-Lock cam and groove couplings *do not interchange in the 8" size.*

• Pressure rating is based on the seal of the mating part. See ratings on page 16.

## Dixon / Boss-Lock Type A Adapters

Size	Unplated Iron		Plated Iron		316 Stainless Steel	
	Part #	Price/E	Part #	Price/E	Part #	Price/E
1/2"	---	---	---	---	<b>50-A-SS</b>	<b>\$45.45</b>
3/4" x 1/2"	---	---	---	---	<b>7550-A-SS</b>	<b>65.10</b>
3/4"	---	---	<b>75-A-PM</b>	<b>\$15.70</b>	<b>75-A-SS</b>	<b>46.75</b>
1"	---	---	<b>100-A-PM</b>	<b>17.25</b>	<b>100-A-SS</b>	<b>49.40</b>
1 1/4"	---	---	---	---	<b>125-A-SS</b>	<b>61.30</b>
1 1/2"	<b>150-A-MI</b>	<b>\$24.90</b>	<b>150-A-PM</b>	<b>27.60</b>	<b>150-A-SS</b>	<b>59.40</b>
2"	<b>200-A-MI</b>	<b>30.00</b>	<b>200-A-PM</b>	<b>31.75</b>	<b>200-A-SS</b>	<b>63.00</b>
2 1/2"	---	---	---	---	<b>250-A-SS</b>	<b>198.75</b>
3"	<b>300-A-MI</b>	<b>50.80</b>	<b>300-A-PM</b>	<b>54.00</b>	<b>300-A-SS</b>	<b>119.40</b>
4"	<b>400-A-MI</b>	<b>82.00</b>	<b>400-A-PM</b>	<b>86.60</b>	<b>400-A-SS</b>	<b>222.00</b>
5"	<b>500-A-MI</b>	<b>173.25</b>	---	---	<b>500-A-SS</b>	<b>346.00</b>
6"	---	---	<b>600-A-PM</b>	<b>190.00</b>	<b>600-A-SS</b>	<b>384.80</b>
8" DIX	---	---	---	---	---	---
8" BL	---	---	---	---	---	---

## Dixon / Boss-Lock Type E Adapters

Size	Unplated Iron		Plated Iron		316 Stainless Steel	
	Part #	Price/E	Part #	Price/E	Part #	Price/E
1/2"	---	---	---	---	<b>50-E-SS</b>	<b>\$46.35</b>
3/4" x 1/2"	---	---	---	---	<b>7550-E-SS</b>	<b>55.20</b>
3/4"	---	---	<b>75-E-PM</b>	<b>\$23.30</b>	<b>75-E-SS</b>	<b>49.20</b>
1"	---	---	<b>100-E-PM</b>	<b>27.30</b>	<b>100-E-SS</b>	<b>51.00</b>
1 1/4"	---	---	<b>125-E-PM</b>	<b>31.00</b>	<b>125-E-SS</b>	<b>72.10</b>
1 1/2"	<b>150-E-MI</b>	<b>\$29.75</b>	<b>150-E-PM</b>	<b>31.50</b>	<b>150-E-SS</b>	<b>66.90</b>
2"	<b>200-E-MI</b>	<b>37.60</b>	<b>200-E-PM</b>	<b>39.10</b>	<b>200-E-SS</b>	<b>68.50</b>
2 1/2"	---	---	---	---	<b>250-E-SS</b>	<b>190.00</b>
3"	<b>300-E-MI</b>	<b>51.80</b>	<b>300-E-PM</b>	<b>58.20</b>	<b>300-E-SS</b>	<b>127.80</b>
4"	<b>400-E-MI</b>	<b>94.40</b>	<b>400-E-PM</b>	<b>99.75</b>	<b>400-E-SS</b>	<b>278.00</b>
5"	---	---	---	---	<b>500-E-SS</b>	<b>420.00</b>
6"	---	---	<b>600-E-PM</b>	<b>231.00</b>	<b>600-E-SS</b>	<b>538.00</b>
8" DIX	---	---	---	---	---	---
8" BL	---	---	---	---	---	---

## Dixon / Boss-Lock Type F Adapters



male NPT x male adapter

Size	356T6 Aluminum		Aluminum Hard Coat		Brass	
	Part #	Price/E	Part #	Price/E	Part #	Price/E
1/2"	<b>50-F-AL</b>	<b>\$9.95</b>	---	---	<b>50-F-BR</b>	<b>\$20.00</b>
3/4" x 1/2"	<b>7550-F-AL</b>	<b>23.00</b>	---	---	<b>7550-F-BR</b>	<b>48.50</b>
3/4"	<b>75-F-AL</b>	<b>11.25</b>	---	---	<b>75-F-BR</b>	<b>24.20</b>
1"	<b>100-F-AL</b>	<b>14.25</b>	---	---	<b>100-F-BR</b>	<b>31.50</b>
1 1/4"	<b>125-F-AL</b>	<b>17.00</b>	---	---	<b>125-F-BR</b>	<b>52.75</b>
1 1/2"	<b>150-F-AL</b>	<b>17.80</b>	<b>150-F-ALH</b>	<b>\$33.25</b>	<b>150-F-BR</b>	<b>42.60</b>
2"	<b>200-F-AL</b>	<b>20.50</b>	<b>200-F-ALH</b>	<b>38.30</b>	<b>200-F-BR</b>	<b>53.00</b>
2 1/2"	<b>250-F-AL</b>	<b>37.25</b>	---	---	<b>250-F-BR</b>	<b>127.60</b>
3"	<b>300-F-AL</b>	<b>38.25</b>	<b>300-F-ALH</b>	<b>62.90</b>	<b>300-F-BR</b>	<b>147.00</b>
4"	<b>400-F-AL</b>	<b>70.40</b>	<b>400-F-ALH</b>	<b>107.00</b>	<b>400-F-BR</b>	<b>205.00</b>
5"	<b>500-F-AL</b>	<b>129.15</b>	---	---	---	---
6"	<b>600-F-AL</b>	<b>149.00</b>	<b>600-F-ALH</b>	<b>220.45</b>	<b>600-F-BR</b>	<b>540.00</b>
8" DIX	<b>800-F-AL</b> <sup>1</sup>	<b>450.00</b>	---	---	---	---
8" BL	<b>801-F-AL</b> <sup>1</sup>	<b>445.00</b>	---	---	---	---

**SAFETY**  
ALERT

<sup>1</sup> Dixon and Boss-Lock cam and groove couplings *do not interchange in the 8" size.*  
• Pressure rating is based on the seal of the mating part. See ratings on page 16.

## Dixon / Boss-Lock Type DP Dust Plugs



dust plug

Size	356T6 Aluminum		Aluminum Hard Coat		Brass	
	Part #	Price/E	Part #	Price/E	Part #	Price/E
1/2"	---	---	---	---	<b>50-DP-BR</b>	<b>\$25.10</b>
3/4"	<b>75-DP-AL</b>	<b>\$11.80</b>	---	---	<b>75-DP-BR</b>	<b>26.85</b>
1"	<b>100-DP-AL</b>	<b>13.00</b>	---	---	<b>100-DP-BR</b>	<b>23.75</b>
1 1/4"	<b>125-DP-AL</b>	<b>15.50</b>	---	---	<b>125-DP-BR</b>	<b>41.60</b>
1 1/2"	<b>150-DP-AL</b>	<b>15.85</b>	<b>150-DP-ALH</b>	<b>\$32.25</b>	<b>150-DP-BR</b>	<b>46.10</b>
2"	<b>200-DP-AL</b>	<b>16.40</b>	<b>200-DP-ALH</b>	<b>34.10</b>	<b>200-DP-BR</b>	<b>46.40</b>
2 1/2"	<b>250-DP-AL</b>	<b>23.75</b>	---	---	---	---
3"	<b>300-DP-AL</b>	<b>24.60</b>	<b>300-DP-ALH</b>	<b>47.00</b>	<b>300-DP-BR</b>	<b>74.40</b>
4"	<b>400-DP-AL</b>	<b>36.15</b>	<b>400-DP-ALH</b>	<b>68.60</b>	<b>400-DP-BR</b>	<b>159.00</b>
5"	<b>500-DP-AL</b>	<b>64.25</b>	---	---	---	---
6"	<b>600-DP-AL</b>	<b>81.75</b>	<b>600-DP-ALH</b>	<b>130.60</b>	<b>600-DP-BR</b>	<b>540.00</b>
8" DIX	<b>800-DP-AL</b> <sup>1</sup>	<b>343.00</b>	---	---	---	---
8" BL	<b>801-DP-AL</b> <sup>1</sup>	<b>348.00</b>	---	---	---	---

<sup>1</sup> Dixon and Boss-Lock cam and groove couplings *do not interchange in the 8" size.*

**SAFETY**  
ALERT

*Dust caps and dust plugs are not to be used in pressure applications for safety and environmental reasons.*

## Dixon / Boss-Lock Type F Adapters

Size	Unplated Iron		Plated Iron		316 Stainless Steel	
	Part #	Price/E	Part #	Price/E	Part #	Price/E
1/2"	---	---	---	---	<b>50-F-SS</b>	<b>\$48.40</b>
3/4" x 1/2"	---	---	---	---	<b>7550-F-SS</b>	<b>69.82</b>
3/4"	---	---	<b>75-F-PM</b>	<b>\$22.50</b>	<b>75-F-SS</b>	<b>55.30</b>
1"	---	---	<b>100-F-PM</b>	<b>21.20</b>	<b>100-F-SS</b>	<b>60.75</b>
1 1/4"	---	---	---	---	<b>125-F-SS</b>	<b>84.70</b>
1 1/2"	<b>150-F-MI</b>	<b>\$31.10</b>	<b>150-F-PM</b>	<b>34.95</b>	<b>150-F-SS</b>	<b>79.30</b>
2"	<b>200-F-MI</b>	<b>38.00</b>	<b>200-F-PM</b>	<b>40.85</b>	<b>200-F-SS</b>	<b>83.00</b>
2 1/2"	---	---	---	---	<b>250-F-SS</b>	<b>281.00</b>
3"	<b>300-F-MI</b>	<b>73.25</b>	<b>300-F-PM</b>	<b>74.40</b>	<b>300-F-SS</b>	<b>170.00</b>
4"	<b>400-F-MI</b>	<b>108.00</b>	<b>400-F-PM</b>	<b>113.20</b>	<b>400-F-SS</b>	<b>292.30</b>
5"	---	---	---	---	---	---
6"	---	---	<b>600-F-PM</b>	<b>257.25</b>	<b>600-F-SS</b>	<b>415.80</b>
8" DIX	---	---	---	---	---	---
8" BL	---	---	---	---	---	---

## Dixon / Boss-Lock Type DP Dust Plugs

Size	Unplated Iron		Plated Iron		316 Stainless Steel	
	Part #	Price/E	Part #	Price/E	Part #	Price/E
1/2"	---	---	---	---	<b>50-DP-SS</b>	<b>\$40.60</b>
3/4"	---	---	---	---	<b>75-DP-SS</b>	<b>42.40</b>
1"	---	---	<b>100-DP-PM</b>	<b>\$28.00</b>	<b>100-DP-SS</b>	<b>44.50</b>
1 1/4"	---	---	<b>125-DP-PM</b>	<b>30.00</b>	<b>125-DP-SS</b>	<b>47.80</b>
1 1/2"	<b>150-DP-MI</b>	<b>\$23.00</b>	<b>150-DP-PM</b>	<b>25.75</b>	<b>150-DP-SS</b>	<b>56.90</b>
2"	<b>200-DP-MI</b>	<b>32.15</b>	<b>200-DP-PM</b>	<b>33.30</b>	<b>200-DP-SS</b>	<b>64.00</b>
2 1/2"	---	---	<b>250-DP-PM</b>	<b>36.00</b>	<b>250-DP-SS</b>	<b>150.60</b>
3"	<b>300-DP-MI</b>	<b>41.10</b>	<b>300-DP-PM</b>	<b>44.80</b>	<b>300-DP-SS</b>	<b>102.70</b>
4"	<b>400-DP-MI</b>	<b>64.35</b>	<b>400-DP-PM</b>	<b>72.50</b>	<b>400-DP-SS</b>	<b>175.00</b>
5"	---	---	---	---	---	---
6"	---	---	---	---	<b>600-DP-SS</b>	<b>378.00</b>
8" DIX	---	---	---	---	---	---
8" BL	---	---	---	---	---	---

Dust caps and dust plugs are not to be used in pressure applications for safety and environmental reasons.

**SAFETY**  
ALERT

### Dixon Type C Couplers



female coupler x hose shank

Size	356T6 Aluminum		Aluminum Hard Coat		Brass	
	Part #	Price/E	Part #	Price/E	Part #	Price/E
1/2"	50-C-AL	\$20.25	---	---	50-C-BR	\$43.00
3/4"	75-C-AL	23.10	---	---	75-C-BR	48.20
1"	100-C-AL	23.60	---	---	100-C-BR	55.75
1 1/4"	125-C-AL <sup>2</sup>	54.00	---	---	125-C-BR <sup>2</sup>	82.20
1 1/2"	150-C-AL	30.60	150-C-ALH	\$44.70	150-C-BR	78.00
2"	200-C-AL	34.65	200-C-ALH	53.75	200-C-BR	95.10
2 1/2"	250-C-AL <sup>2</sup>	61.60	---	---	250-C-BR <sup>2</sup>	128.00
3"	300-C-AL	54.50	300-C-ALH	83.70	300-C-BR	173.80
4"	400-C-AL	75.85	400-C-ALH	111.40	400-C-BR	230.00
5"	500-C-AL	123.85	---	---	---	---
6"	600-C-AL	184.70	600-C-ALH	251.00	600-C-BR	750.00
8"	800-C-AL <sup>1</sup>	735.00	---	---	---	---

**SAFETY**  
ALERT

- <sup>1</sup> Dixon and Boss-Lock cam and groove couplings *do not interchange in the 8" size*. The 8" Andrew design has 4 cam arms, Dixon design has 2 cam arms.
- <sup>2</sup> Parts are manufactured in Canada.

### Boss-Lock Type C Couplers



female coupler x hose shank

Size	356T6 Aluminum		Brass	
	Part #	Price/E	Part #	Price/E
3/4" x 1/2"	---	---	---	---
3/4"	AC075	\$34.85	BC075	\$57.00
1"	AC100	37.30	BC100	68.80
1 1/4"	AC125	43.60	BC125	82.95
1 1/2"	AC150	41.50	BC150	87.50
2"	AC200	44.80	BC200	102.85
2 1/2"	AC250	53.20	BC250	154.25
3"	AC300	67.95	BC300	165.00
4"	AC400	91.60	BC400	303.00
6"	AC600	201.40	BC600	703.50
8"	AC800 <sup>1</sup>	568.00	---	---

**SAFETY**  
ALERT

- <sup>1</sup> Dixon and Boss-Lock cam and groove couplings *do not interchange in the 8" size*. The 8" Andrew design has 4 cam arms, Dixon design has 2 cam arms.

### EZ Boss-Lock Type C Couplers



female coupler x hose shank

Size	356T6 Aluminum		Brass	
	Part #	Price/E	Part #	Price/E
3/4" x 1/2"	---	---	---	---
3/4"	AC075EZ	\$60.80	BC075EZ	\$108.70
1"	AC100EZ	68.80	BC100EZ	112.00
1 1/4"	---	---	BC125EZ	160.00
1 1/2"	AC150EZ	72.80	BC150EZ	127.40
2"	AC200EZ	78.40	BC200EZ	145.90
2 1/2"	AC250EZ	89.25	---	---
3"	AC300EZ	114.40	BC300EZ	232.95
4"	AC400EZ	141.60	BC400EZ	340.00
6"	AC600EZ	315.00	---	---
8"	AC800EZ <sup>1</sup>	600.00	---	---

**SAFETY**  
ALERT

- <sup>1</sup> Dixon and Boss-Lock cam and groove couplings *do not interchange in the 8" size*. The 8" Andrew design has 4 cam arms, Dixon design has 2 cam arms.



## Dixon Type C Couplers

Size	Unplated Iron		316 Stainless Steel	
	Part #	Price/E	Part #	Price/E
½"	---	---	<b>50-C-SS</b>	<b>\$57.60</b>
¾"	---	---	<b>75-C-SS</b>	<b>69.10</b>
1"	---	---	<b>100-C-SS</b>	<b>79.30</b>
1¼"	---	---	<b>125-C-SS</b>	<b>126.00</b>
1½"	<b>150-C-MI</b>	<b>\$48.00</b>	<b>150-C-SS</b>	<b>96.60</b>
2"	<b>200-C-MI</b>	<b>52.50</b>	<b>200-C-SS</b>	<b>112.00</b>
2½"	---	---	<b>250-C-SS</b>	<b>266.60</b>
3"	<b>300-C-MI</b>	<b>85.80</b>	<b>300-C-SS</b>	<b>198.70</b>
4"	<b>400-C-MI</b>	<b>138.60</b>	<b>400-C-SS</b>	<b>320.00</b>
5"	---	---	<b>500-C-SS</b>	<b>474.00</b>
6"	---	---	<b>600-C-SS</b>	<b>501.90</b>
8"	---	---	---	---

Finger rings are not supplied on ½" - 1" Dixon couplings.

½" Dixon has only one cam arm.

Couplers are supplied standard with a Buna-N gasket. Other gasket types are available on pages 65-67.

## Boss-Lock Type C Couplers

Size	Plated Iron		316 Stainless Steel	
	Part #	Price/E	Part #	Price/E
¾" x ½"	---	---	<b>RC050BL</b>	<b>\$88.90</b>
¾"	<b>IC075</b>	<b>\$66.25</b>	<b>RC075BL</b>	<b>90.40</b>
1"	<b>IC100</b>	<b>52.80</b>	<b>RC100BL</b>	<b>97.20</b>
1¼"	---	---	<b>RC125BL</b>	<b>122.60</b>
1½"	<b>IC150</b>	<b>59.25</b>	<b>RC150BLNO</b>	<b>111.70</b>
2"	<b>IC200</b>	<b>80.40</b>	<b>RC200BLNO</b>	<b>113.40</b>
2½"	---	---	---	---
3"	<b>IC300</b>	<b>105.00</b>	<b>RC300BL</b>	<b>210.40</b>
4"	<b>IC400</b>	<b>150.00</b>	<b>RC400BLNO</b>	<b>288.70</b>
6"	<b>IC600</b>	<b>391.00</b>	---	---
8"	---	---	---	---

All Boss-Lock couplers are supplied with safety clips.

Couplers are supplied standard with a Buna-N gasket. Other gasket types are available on pages 65-67.

## EZ Boss-Lock Type C Couplers

Size	316 Stainless Steel	
	Part #	Price/E
¾" x ½"	<b>RC050EZ</b>	<b>\$105.70</b>
¾"	<b>RC075EZ</b>	<b>99.00</b>
1"	<b>RC100EZCR</b>	<b>110.80</b>
1¼"	<b>RC125EZ</b>	<b>145.25</b>
1½"	<b>RC150EZNO</b>	<b>113.75</b>
2"	<b>RC200EZNO</b>	<b>121.30</b>
2½"	---	---
3"	<b>RC300EZCR</b>	<b>208.20</b>
4"	<b>RC400EZCR</b>	<b>310.85</b>
6"	<b>RC600EZCR</b>	<b>590.00</b>
8"	---	---

### SAFETY ALERT

*Under no circumstances should the EZ Boss-Lock cam arms be used on any fitting not specifically designed for their use. See pages 17 and 63 for further specifications.*

Couplers are supplied standard with a Buna-N gasket. Other gasket types are available on pages 65-67.

**Dixon Type D Couplers**

female coupler x female NPT

Size	356T6 Aluminum		Aluminum Hard Coat		Brass	
	Part #	Price/E	Part #	Price/E	Part #	Price/E
1/2"	50-D-AL	\$24.80	---	---	50-D-BR	\$38.70
3/4"	75-D-AL	24.20	---	---	75-D-BR	46.80
1"	100-D-AL	24.50	---	---	100-D-BR	49.60
1 1/4"	125-D-AL <sup>2</sup>	47.20	---	---	125-D-BR <sup>2</sup>	84.80
1 1/2"	150-D-AL	30.15	150-D-ALH	\$51.25	150-D-BR	70.20
2"	200-D-AL	33.60	200-D-ALH	57.25	200-D-BR	89.75
2 1/2"	250-D-AL <sup>2</sup>	59.80	---	---	250-D-BR <sup>2</sup>	133.45
3"	300-D-AL	53.00	300-D-ALH	81.60	300-D-BR	157.90
4"	400-D-AL	75.70	400-D-ALH	125.00	400-D-BR	233.00
5"	500-D-AL	130.00	---	---	500-D-BR	462.00
6"	600-D-AL	177.00	600-D-ALH	260.00	600-D-BR	614.25
8"	800-D-AL <sup>1</sup>	777.00	---	---	---	---

**SAFETY**  
ALERT

<sup>1</sup> Dixon and Boss-Lock cam and groove couplings *do not interchange in the 8" size*. The 8" Andrew design has 4 cam arms, Dixon design has 2 cam arms.

<sup>2</sup> Parts are manufactured in Canada.

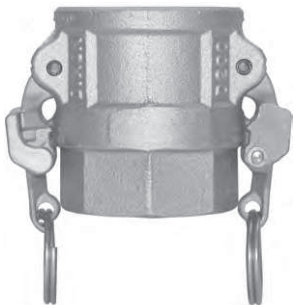
**Boss-Lock Type D Couplers**

female coupler x female NPT

Size	356T6 Aluminum		Brass	
	Part #	Price/E	Part #	Price/E
3/4" x 1/2"	AD050	\$44.80	BD050	\$59.00
3/4"	AD075	39.00	BD075	60.60
1"	AD100	39.20	BD100	66.50
1 1/4"	AD125	42.65	BD125	80.50
1 1/2"	AD150	41.80	BD150	82.00
2"	AD200	42.85	BD200	99.60
2 1/2"	AD250	63.00	BD250	161.30
3"	AD300	65.00	BD300	184.50
4"	AD400	85.30	BD400	243.40
5"	AD500	141.00	---	---
6"	AD600	218.30	BD600	614.25
8"	AD800 <sup>1</sup>	526.70	---	---

**SAFETY**  
ALERT

<sup>1</sup> Dixon and Boss-Lock cam and groove couplings *do not interchange in the 8" size*. The 8" Andrew design has 4 cam arms, Dixon design has 2 cam arms.

**EZ Boss-Lock Type D Couplers**

female coupler x female NPT

Size	356T6 Aluminum		Brass	
	Part #	Price/E	Part #	Price/E
3/4" x 1/2"	---	---	---	---
3/4"	AD075EZ	\$67.25	BD075EZ	\$105.00
1"	AD100EZ	70.55	BD100EZ	111.00
1 1/4"	---	---	BD125EZ	138.00
1 1/2"	AD150EZ	74.30	BD150EZ	123.00
2"	AD200EZ	75.25	BD200EZ	143.50
2 1/2"	AD250EZ	91.55	BD250EZ	195.00
3"	AD300EZ	120.10	BD300EZ	253.00
4"	AD400EZ	138.20	BD400EZ	309.90
5"	AD500EZ	205.00	---	---
6"	AD600EZ	311.50	---	---
8"	AD800EZ <sup>1</sup>	536.00	---	---

**SAFETY**  
ALERT

<sup>1</sup> Dixon and Boss-Lock cam and groove couplings *do not interchange in the 8" size*. The 8" Andrew design has 4 cam arms, Dixon design has 2 cam arms.



## Dixon Type D Couplers

Size	Unplated Iron		316 Stainless Steel	
	Part #	Price/E	Part #	Price/E
1/2"	---	---	<b>50-D-SS</b>	<b>\$70.60</b>
3/4"	---	---	<b>75-D-SS</b>	<b>76.40</b>
1"	---	---	<b>100-D-SS</b>	<b>80.00</b>
1 1/4"	---	---	<b>125-D-SS</b>	<b>130.30</b>
1 1/2"	<b>150-D-MI</b>	<b>\$53.55</b>	<b>150-D-SS</b>	<b>108.15</b>
2"	<b>200-D-MI</b>	<b>56.95</b>	<b>200-D-SS</b>	<b>117.70</b>
2 1/2"	---	---	<b>250-D-SS</b>	<b>238.00</b>
3"	<b>300-D-MI</b>	<b>98.00</b>	<b>300-D-SS</b>	<b>219.30</b>
4"	<b>400-D-MI</b>	<b>120.30</b>	<b>400-D-SS</b>	<b>306.00</b>
5"	<b>500-D-MI</b>	<b>203.00</b>	<b>500-D-SS</b>	<b>535.00</b>
6"	---	---	<b>600-D-SS</b>	<b>620.00</b>
8"	---	---	---	---

Finger rings are not supplied on 1/2" - 1" Dixon couplings.

1/2" Dixon has only one cam arm.

Couplers are supplied standard with a Buna-N gasket. Other gasket types are available on pages 65-67.

## Boss-Lock Type D Couplers

Size	Plated Iron		316 Stainless Steel	
	Part #	Price/E	Part #	Price/E
3/4" x 1/2"	---	---	<b>RD050BL</b>	<b>\$99.00</b>
3/4"	<b>ID075</b>	<b>\$52.10</b>	<b>RD075BL</b>	<b>90.60</b>
1"	<b>ID100</b>	<b>55.30</b>	<b>RD100BL</b>	<b>92.20</b>
1 1/4"	---	---	<b>RD125BL</b>	<b>130.20</b>
1 1/2"	<b>ID150</b>	<b>63.00</b>	<b>RD150BL</b>	<b>119.40</b>
2"	<b>ID200</b>	<b>78.70</b>	<b>RD200BL</b>	<b>132.90</b>
2 1/2"	---	---	---	---
3"	<b>ID300</b>	<b>113.50</b>	<b>RD300BL</b>	<b>248.00</b>
4"	<b>ID400</b>	<b>129.50</b>	<b>RD400BL</b>	<b>323.00</b>
5"	---	---	---	---
6"	<b>ID600</b>	<b>418.00</b>	---	---
8"	---	---	---	---

All Boss-Lock couplers are supplied with safety clips.

Couplers are supplied standard with a Buna-N gasket. Other gasket types are available on pages 65-67.

## EZ Boss-Lock Type D Couplers

Size	316 Stainless Steel	
	Part #	Price/E
3/4" x 1/2"	<b>RD050EZ</b>	<b>\$118.00</b>
3/4"	<b>RD075EZ</b>	<b>106.50</b>
1"	<b>RD100EZ</b>	<b>107.20</b>
1 1/4"	<b>RD125EZ</b>	<b>141.70</b>
1 1/2"	<b>RD150EZ</b>	<b>145.80</b>
2"	<b>RD200EZ</b>	<b>147.00</b>
2 1/2"	---	---
3"	<b>RD300EZ</b>	<b>278.00</b>
4"	<b>RD400EZ</b>	<b>337.60</b>
5"	---	---
6"	<b>RD600EZ</b>	<b>525.00</b>
8"	---	---

### SAFETY ALERT

*Under no circumstances should the EZ Boss-Lock cam arms be used on any fitting not specifically designed for their use. See pages 17 and 63 for further specifications.*

Couplers are supplied standard with a Buna-N gasket. Other gasket types are available on pages 65-67.

### Dixon Type B Couplers



female coupler x male NPT

Size	356T6 Aluminum		Aluminum Hard Coat		Brass	
	Part #	Price/E	Part #	Price/E	Part #	Price/E
1/2"	<b>50-B-AL</b>	\$24.15	---	---	<b>50-B-BR</b>	\$37.30
3/4"	<b>75-B-AL</b>	24.10	---	---	<b>75-B-BR</b>	43.15
1"	<b>100-B-AL</b>	26.25	---	---	<b>100-B-BR</b>	49.10
1 1/4"	<b>125-B-AL</b> <sup>2</sup>	39.60	---	---	---	---
1 1/2"	<b>150-B-AL</b>	27.20	<b>150-B-ALH</b>	\$46.40	<b>150-B-BR</b>	73.75
2"	<b>200-B-AL</b>	34.10	<b>200-B-ALH</b>	54.00	<b>200-B-BR</b>	82.10
2 1/2"	<b>250-B-AL</b> <sup>2</sup>	60.50	---	---	---	---
3"	<b>300-B-AL</b>	54.35	<b>300-B-ALH</b>	81.30	<b>300-B-BR</b>	161.00
4"	<b>400-B-AL</b>	80.80	<b>400-B-ALH</b>	122.00	<b>400-B-BR</b>	225.70
5"	<b>500-B-AL</b>	140.90	---	---	---	---
6"	<b>600-B-AL</b>	186.80	<b>600-B-ALH</b>	267.00	---	---
8"	<b>800-B-AL</b> <sup>1,3</sup>	1030.00	---	---	---	---

**SAFETY**  
ALERT

- <sup>1</sup> Dixon and Boss-Lock cam and groove couplings *do not interchange in the 8" size*. The 8" Andrew design has 4 cam arms, Dixon design has 2 cam arms.
- <sup>2</sup> Parts are manufactured in Canada.
- <sup>3</sup> Parts are produced as a welded fabrication.

### Boss-Lock Type B Couplers



female coupler x male NPT

Size	356T6 Aluminum		Brass	
	Part #	Price/E	Part #	Price/E
3/4" x 1/2"	---	---	<b>BB050</b>	\$68.75
3/4"	---	---	<b>BB075</b>	68.40
1"	<b>AB100</b>	\$41.20	<b>BB100</b>	69.10
1 1/4"	<b>AB125</b>	46.50	<b>BB125</b>	82.50
1 1/2"	<b>AB150</b>	42.30	<b>BB150</b>	90.85
2"	<b>AB200</b>	42.65	<b>BB200</b>	107.10
2 1/2"	<b>AB250</b>	60.90	<b>BB250</b>	137.55
3"	<b>AB300</b>	72.70	<b>BB300</b>	199.50
4"	<b>AB400</b>	100.00	<b>BB400</b>	288.75
6"	<b>AB600</b>	255.40	---	--

### EZ Boss-Lock Type B Couplers



female coupler x male NPT

Size	356T6 Aluminum		Brass	
	Part #	Price/E	Part #	Price/E
3/4" x 1/2"	---	---	---	---
3/4"	---	---	<b>BB075EZ</b>	\$94.00
1"	<b>AB100EZ</b>	\$69.20	<b>BB100EZ</b>	116.00
1 1/4"	---	---	<b>BB125EZ</b>	124.60
1 1/2"	<b>AB150EZ</b>	77.00	<b>BB150EZ</b>	134.10
2"	<b>AB200EZ</b>	81.30	<b>BB200EZ</b>	147.40
3"	<b>AB300EZ</b>	120.75	<b>BB300EZ</b>	275.60
4"	<b>AB400EZ</b>	152.50	<b>BB400EZ</b>	360.00
6"	---	---	---	---

## Dixon Type B Couplers

Size	Unplated Iron		316 Stainless Steel	
	Part #	Price/E	Part #	Price/E
1/2"	---	---	<b>50-B-SS</b>	<b>\$74.80</b>
3/4"	---	---	<b>75-B-SS</b>	<b>73.40</b>
1"	---	---	<b>100-B-SS</b>	<b>81.00</b>
1 1/4"	---	---	---	---
1 1/2"	<b>150-B-MI</b>	<b>\$56.00</b>	<b>150-B-SS</b>	<b>105.80</b>
2"	<b>200-B-MI</b>	<b>64.00</b>	<b>200-B-SS</b>	<b>119.60</b>
2 1/2"	---	---	<b>250-B-SS</b>	<b>284.00</b>
3"	<b>300-B-MI</b>	<b>103.00</b>	<b>300-B-SS</b>	<b>225.00</b>
4"	<b>400-B-MI</b>	<b>150.30</b>	<b>400-B-SS</b>	<b>275.00</b>
5"	---	---	---	---
6"	---	---	<b>600-B-SS</b>	<b>734.00</b>
8"	---	---	---	---

Finger rings are not supplied on 1/2" - 1" Dixon couplings.

1/2" Dixon has only one cam arm.

Couplers are supplied standard with a Buna-N gasket. Other gasket types are available on pages 65-67.

## Boss-Lock Type B Couplers

Size	Plated Iron		316 Stainless Steel	
	Part #	Price/E	Part #	Price/E
3/4" x 1/2"	---	---	<b>RB050BL</b>	<b>\$96.40</b>
3/4"	---	---	<b>RB075BL</b>	<b>88.25</b>
1"	<b>IB100</b>	<b>\$55.40</b>	<b>RB100BL</b>	<b>93.75</b>
1 1/4"	---	---	<b>RB125BL</b>	<b>122.85</b>
1 1/2"	---	---	<b>RB150BL</b>	<b>128.00</b>
2"	<b>IB200</b>	<b>73.75</b>	<b>RB200BL</b>	<b>136.25</b>
2 1/2"	---	---	---	---
3"	---	---	<b>RB300BL</b>	<b>256.00</b>
4"	---	---	<b>RB400BL</b>	<b>296.00</b>
6"	---	---	---	---

All Boss-Lock couplers are supplied with safety clips.

Couplers are supplied standard with a Buna-N gasket. Other gasket types are available on pages 65-67.

## EZ Boss-Lock Type B Couplers

Size	316 Stainless Steel	
	Part #	Price/E
3/4" x 1/2"	<b>RB050EZ</b>	<b>\$113.00</b>
3/4"	<b>RB075EZ</b>	<b>104.00</b>
1"	<b>RB100EZ</b>	<b>109.70</b>
1 1/4"	<b>RB125EZ</b>	<b>142.10</b>
1 1/2"	<b>RB150EZ</b>	<b>143.65</b>
2"	<b>RB200EZ</b>	<b>157.00</b>
3"	<b>RB300EZ</b>	<b>272.95</b>
4"	<b>RB400EZ</b>	<b>320.00</b>
6"	<b>RB600EZ</b>	<b>595.30</b>

### SAFETY ALERT

Under no circumstances should the EZ Boss-Lock cam arms be used on any fitting not specifically designed for their use. See pages 17 and 63 for further specifications.

Couplers are supplied standard with a Buna-N gasket. Other gasket types are available on pages 65-67.

### Dixon Type DC Dust Caps



dust cap

Size	356T6 Aluminum		Aluminum Hard Coat		Brass	
	Part #	Price/E	Part #	Price/E	Part #	Price/E
1/2"	50-DC-AL	\$21.40	---	---	50-DC-BR	\$32.50
3/4"	75-DC-AL	23.70	---	---	75-DC-BR	42.50
1"	100-DC-AL	23.65	---	---	100-DC-BR	51.70
1 1/2"	150-DC-AL	30.55	150-DC-ALH	\$47.00	150-DC-BR	73.15
2"	200-DC-AL	29.20	200-DC-ALH	46.90	200-DC-BR	70.95
2 1/2"	250-DC-AL <sup>2</sup>	50.70	---	---	---	---
3"	300-DC-AL	39.50	300-DC-ALH	65.30	300-DC-BR	102.00
4"	400-DC-AL	52.45	400-DC-ALH	96.50	400-DC-BR	146.00
5"	500-DC-AL	86.40	---	---	500-DC-BR	320.90
6"	600-DC-AL	129.00	600-DC-ALH	205.00	---	---
8"	800-DC-AL <sup>1</sup>	534.00	---	---	---	---

**SAFETY**  
ALERT

<sup>1</sup> Dixon and Boss-Lock cam and groove couplings *do not interchange in the 8" size*. The 8" Dixon dust cap has 2 cam arms.

<sup>2</sup> Parts are manufactured in Canada.

*Dust caps and dust plugs are not to be used in pressure applications for safety and environmental reasons.*

### Boss-Lock Type H Dust Caps



dust cap

Size	356T6 Aluminum		Brass	
	Part #	Price/E	Part #	Price/E
3/4"	---	---	---	---
1"	AH100	\$38.25	BH100	\$67.10
1 1/4"	AH125	38.30	BH125	74.25
1 1/2"	AH150	39.90	BH150	78.75
2"	AH200	40.35	BH200	103.40
2 1/2"	AH250	43.95	BH250	120.75
3"	AH300	71.40	BH300	150.60
4"	AH400	76.80	BH400	199.80
6"	AH600	198.20	BH600	480.00
8"	AH800 <sup>1</sup>	438.80	---	---

**SAFETY**  
ALERT

<sup>1</sup> Dixon and Boss-Lock cam and groove couplings *do not interchange in the 8" size*. The 8" Boss-Lock design has 2 cam arms.

*Dust caps and dust plugs are not to be used in pressure applications for safety and environmental reasons.*

### EZ Boss-Lock Type H Dust Caps



dust cap

Size	356T6 Aluminum		Brass	
	Part #	Price/E	Part #	Price/E
3/4"	---	---	---	---
1"	AH100EZ	\$71.30	BH100EZ	\$114.00
1 1/4"	---	---	---	---
1 1/2"	AH150EZ	72.00	BH150EZ	116.30
2"	AH200EZ	72.80	BH200EZ	125.50
2 1/2"	AH250EZ	80.00	---	---
3"	AH300EZ	103.50	BH300EZ	244.00
4"	AH400EZ	122.40	---	---
6"	AH600EZ	240.00	---	---

**SAFETY**  
ALERT

*Dust caps and dust plugs are not to be used in pressure applications for safety and environmental reasons.*

## Dixon Type DC Dust Caps

Size	Unplated Iron		316 Stainless Steel	
	Part #	Price/E	Part #	Price/E
1/2"	---	---	<b>50-DC-SS</b>	<b>\$66.95</b>
3/4"	---	---	<b>75-DC-SS</b>	<b>63.75</b>
1"	---	---	<b>100-DC-SS</b>	<b>71.50</b>
1 1/2"	---	---	<b>150-DC-SS</b>	<b>89.00</b>
2"	<b>200-DC-MI</b>	<b>\$49.80</b>	<b>200-DC-SS</b>	<b>105.00</b>
2 1/2"	---	---	<b>250-DC-SS</b>	<b>202.00</b>
3"	<b>300-DC-MI</b>	<b>67.20</b>	<b>300-DC-SS</b>	<b>133.00</b>
4"	<b>400-DC-MI</b>	<b>102.00</b>	<b>400-DC-SS</b>	<b>195.00</b>
5"	---	---	<b>500-DC-SS</b>	<b>406.00</b>
6"	---	---	<b>600-DC-SS</b>	<b>490.00</b>
8"	---	---	---	---

Finger rings are not supplied on 1/2" - 1" Dixon couplings.

1/2" Dixon has only one cam arm.

Couplers are supplied standard with a Buna-N gasket. Other gasket types are available on pages 65-67.

Dust caps and dust plugs are not to be used in pressure applications for safety and environmental reasons. **SAFETY ALERT**

## Boss-Lock Type H Dust Caps

Size	Plated Iron		316 Stainless Steel	
	Part #	Price/E	Part #	Price/E
3/4"	---	---	<b>RH075BL</b>	<b>\$76.80</b>
1"	---	---	<b>RH100BL</b>	<b>81.95</b>
1 1/4"	---	---	<b>RH125BL</b>	<b>99.25</b>
1 1/2"	<b>IH150</b>	<b>\$57.20</b>	<b>RH150BL</b>	<b>105.25</b>
2"	<b>IH200</b>	<b>65.80</b>	<b>RH200BL</b>	<b>122.95</b>
2 1/2"	---	---	---	---
3"	<b>IH300</b>	<b>91.00</b>	<b>RH300BL</b>	<b>188.65</b>
4"	<b>IH400</b>	<b>120.60</b>	<b>RH400BL</b>	<b>224.00</b>
6"	<b>IH600</b>	<b>315.00</b>	---	---
8"	---	---	---	---

All Boss-Lock couplers are supplied with safety clips.

Couplers are supplied standard with a Buna-N gasket. Other gasket types are available on pages 65-67.

Dust caps and dust plugs are not to be used in pressure applications for safety and environmental reasons. **SAFETY ALERT**

## EZ Boss-Lock Type H Dust Caps

Size	316 Stainless Steel	
	Part #	Price/E
3/4"	<b>RH075EZ</b>	<b>\$93.90</b>
1"	<b>RH100EZ</b>	<b>97.60</b>
1 1/4"	<b>RH125EZ</b>	<b>126.50</b>
1 1/2"	<b>RH150EZ</b>	<b>126.30</b>
2"	<b>RH200EZ</b>	<b>143.45</b>
2 1/2"	---	---
3"	<b>RH300EZ</b>	<b>199.50</b>
4"	<b>RH400EZ</b>	<b>245.00</b>
6"	<b>RH600EZ</b>	<b>467.00</b>

**SAFETY ALERT**

Under no circumstances should the EZ Boss-Lock cam arms be used on any fitting not specifically designed for their use. See pages 18 and 64 for further specifications.

Couplers are supplied standard with a Buna-N gasket. Other gasket types are available on pages 65-67.

Dust caps and dust plugs are not to be used in pressure applications for safety and environmental reasons. **SAFETY ALERT**

## Global Cam and Groove

- designed to interchange with all products produced to MIL-C-27487F
- made to Dixon specifications and branded Dixon
- Buna seals are standard in all couplers
- Pressure rating for adapters, is based on the seal of the mating part.

- Dust caps and dust plugs are not to be used in pressure applications for safety and environmental reasons
- SAFETY ALERT**

### Global Type A Adapters

Size	A380 Aluminum		ASTMC38000 Forged Brass		316 Investment Cast SS	
	Part #	Price/E	Part #	Price/E	Part #	Price/E
1/2"	<b>G50-A-AL</b>	\$6.35	<b>G50-A-BR</b>	\$11.80	---	---
3/4"	<b>G75-A-AL</b>	5.00	<b>G75-A-BR</b>	10.70	<b>G75-A-SS</b>	\$19.00
1"	<b>G100-A-AL</b>	5.10	<b>G100-A-BR</b>	13.70	<b>G100-A-SS</b>	18.60
1 1/4"	<b>G125-A-AL</b>	7.75	<b>G125-A-BR</b>	17.70	<b>G125-A-SS</b>	29.10
1 1/2"	<b>G150-A-AL</b>	5.70	<b>G150-A-BR</b>	20.45	<b>G150-A-SS</b>	31.05
2"	<b>G200-A-AL</b>	6.05	<b>G200-A-BR</b>	26.70	<b>G200-A-SS</b>	37.45
2 1/2"	<b>G250-A-AL</b>	14.60	<b>G250-A-BR</b>	41.05	<b>G250-A-SS</b>	72.30
3"	<b>G300-A-AL</b>	12.40	<b>G300-A-BR</b>	47.05	<b>G300-A-SS</b>	78.35
4"	<b>G400-A-AL</b>	19.55	<b>G400-A-BR</b>	82.80	<b>G400-A-SS</b>	138.35
5"	<b>G500-A-AL</b>	73.60	---	---	---	---
6"	<b>G600-A-AL</b>	51.40	---	---	<b>G600-A-SS</b>	248.50
8"	<b>G800-A-AL</b>	238.55	---	---	---	---



female NPT x male adapter

### Global Type E Adapters

Size	A380 Aluminum		ASTMC38000 Forged Brass		316 Investment Cast SS	
	Part #	Price/E	Part #	Price/E	Part #	Price/E
1/2"	<b>G50-E-AL</b>	\$8.80	<b>G50-E-BR</b>	\$19.20	---	---
3/4"	<b>G75-E-AL</b>	4.35	<b>G75-E-BR</b>	19.70	<b>G75-E-SS</b>	\$16.75
1"	<b>G100-E-AL</b>	5.05	<b>G100-E-BR</b>	19.05	<b>G100-E-SS</b>	22.45
1 1/4"	<b>G125-E-AL</b>	7.55	<b>G125-E-BR</b>	21.35	<b>G125-E-SS</b>	36.10
1 1/2"	<b>G150-E-AL</b>	6.55	<b>G150-E-BR</b>	27.40	<b>G150-E-SS</b>	36.25
2"	<b>G200-E-AL</b>	8.40	<b>G200-E-BR</b>	38.25	<b>G200-E-SS</b>	50.45
2 1/2"	<b>G250-E-AL</b>	16.20	<b>G250-E-BR</b>	63.25	<b>G250-E-SS</b>	83.15
3"	<b>G300-E-AL</b>	15.15	<b>G300-E-BR</b>	76.75	<b>G300-E-SS</b>	110.25
4"	<b>G400-E-AL</b>	25.10	<b>G400-E-BR</b>	123.00	<b>G400-E-SS</b>	161.00
5"	<b>G500-E-AL</b>	78.05	---	---	---	---
6"	<b>G600-E-AL</b>	79.45	---	---	<b>G600-E-SS</b>	360.30
8"	<b>G800-E-AL</b>	406.65	---	---	---	---



hose shank x male adapter

### Global Type F Adapters

Size	A380 Aluminum		ASTMC38000 Forged Brass		316 Investment Cast SS	
	Part #	Price/E	Part #	Price/E	Part #	Price/E
1/2"	<b>G50-F-AL</b>	\$6.60	<b>G50-F-BR</b>	\$14.70	---	---
3/4"	<b>G75-F-AL</b>	5.35	<b>G75-F-BR</b>	13.30	<b>G75-F-SS</b>	\$23.30
1"	<b>G100-F-AL</b>	5.70	<b>G100-F-BR</b>	16.55	<b>G100-F-SS</b>	25.55
1 1/4"	<b>G125-F-AL</b>	9.40	<b>G125-F-BR</b>	29.65	<b>G125-F-SS</b>	41.20
1 1/2"	<b>G150-F-AL</b>	6.80	<b>G150-F-BR</b>	29.75	<b>G150-F-SS</b>	44.75
2"	<b>G200-F-AL</b>	7.65	<b>G200-F-BR</b>	34.60	<b>G200-F-SS</b>	53.80
2 1/2"	<b>G250-F-AL</b>	17.85	<b>G250-F-BR</b>	44.50	<b>G250-F-SS</b>	92.25
3"	<b>G300-F-AL</b>	16.85	<b>G300-F-BR</b>	67.55	<b>G300-F-SS</b>	112.05
4"	<b>G400-F-AL</b>	24.80	<b>G400-F-BR</b>	99.50	<b>G400-F-SS</b>	159.80
5"	<b>G500-F-AL</b>	88.60	---	---	---	---
6"	<b>G600-F-AL</b>	64.60	---	---	<b>G600-F-SS</b>	385.45



male NPT x male adapter



**Global Type DP Dust Plugs**

Size	A380 Aluminum		ASTMC38000 Forged Brass		316 Investment Cast SS	
	Part #	Price/E	Part #	Price/E	Part #	Price/E
½"	<b>G50-DP-AL</b>	<b>\$5.05</b>	<b>G50-DP-BR</b>	<b>\$14.65</b>	---	---
¾"	<b>G75-DP-AL</b>	<b>4.85</b>	<b>G75-DP-BR</b>	<b>12.80</b>	<b>G75-DP-SS</b>	<b>\$15.85</b>
1"	<b>G100-DP-AL</b>	<b>4.75</b>	<b>G100-DP-BR</b>	<b>14.20</b>	<b>G100-DP-SS</b>	<b>18.85</b>
1¼"	<b>G125-DP-AL</b>	<b>5.65</b>	<b>G125-DP-BR</b>	<b>18.75</b>	<b>G125-DP-SS</b>	<b>31.00</b>
1½"	<b>G150-DP-AL</b>	<b>5.45</b>	<b>G150-DP-BR</b>	<b>17.85</b>	<b>G150-DP-SS</b>	<b>29.15</b>
2"	<b>G200-DP-AL</b>	<b>6.55</b>	<b>G200-DP-BR</b>	<b>21.20</b>	<b>G200-DP-SS</b>	<b>33.55</b>
2½"	<b>G250-DP-AL</b>	<b>9.70</b>	<b>G250-DP-BR</b>	<b>34.60</b>	<b>G250-DP-SS</b>	<b>60.10</b>
3"	<b>G300-DP-AL</b>	<b>11.05</b>	<b>G300-DP-BR</b>	<b>37.40</b>	<b>G300-DP-SS</b>	<b>72.85</b>
4"	<b>G400-DP-AL</b>	<b>17.50</b>	<b>G400-DP-BR</b>	<b>62.15</b>	<b>G400-DP-SS</b>	<b>86.85</b>
5"	<b>G500-DP-AL</b>	<b>48.20</b>	---	---	---	---
6"	<b>G600-DP-AL</b>	<b>44.90</b>	---	---	<b>G600-DP-SS</b>	<b>249.95</b>



dust plug

**Global Type B Couplers**

Size	A380 Aluminum		ASTMC38000 Forged Brass		316 Investment Cast Stainless	
	Part #	Price/E	Part #	Price/E	Part #	Price/E
½"	<b>G50-B-AL</b>	<b>\$16.22</b>	<b>G50-B-BR</b>	<b>\$27.10</b>	---	---
¾"	<b>G75-B-AL</b>	<b>10.75</b>	<b>G75-B-BR</b>	<b>24.45</b>	<b>G75-B-SS</b>	<b>\$31.45</b>
1"	<b>G100-B-AL</b>	<b>11.95</b>	<b>G100-B-BR</b>	<b>26.35</b>	<b>G100-B-SS</b>	<b>32.20</b>
1¼"	<b>G125-B-AL</b>	<b>16.30</b>	<b>G125-B-BR</b>	<b>36.70</b>	<b>G125-B-SS</b>	<b>52.45</b>
1½"	<b>G150-B-AL</b>	<b>13.65</b>	<b>G150-B-BR</b>	<b>35.70</b>	<b>G150-B-SS</b>	<b>52.10</b>
2"	<b>G200-B-AL</b>	<b>14.25</b>	<b>G200-B-BR</b>	<b>41.90</b>	<b>G200-B-SS</b>	<b>65.55</b>
2½"	<b>G250-B-AL</b>	<b>25.95</b>	<b>G250-B-BR</b>	<b>63.35</b>	<b>G250-B-SS</b>	<b>94.60</b>
3"	<b>G300-B-AL</b>	<b>23.60</b>	<b>G300-B-BR</b>	<b>77.70</b>	<b>G300-B-SS</b>	<b>109.35</b>
4"	<b>G400-B-AL</b>	<b>33.35</b>	<b>G400-B-BR</b>	<b>108.85</b>	<b>G400-B-SS</b>	<b>160.40</b>
5"	<b>G500-B-AL</b>	<b>97.05</b>	---	---	---	---
6"	<b>G600-B-AL</b>	<b>92.70</b>	---	---	<b>G600-B-SS</b>	<b>429.75</b>



female coupler x male NPT

**Global Type C Couplers**

Size	A380 Aluminum		ASTMC38000 Forged Brass		316 Investment Cast Stainless	
	Part #	Price/E	Part #	Price/E	Part #	Price/E
½"	<b>G50-C-AL</b>	<b>\$13.15</b>	<b>G50-C-BR</b>	<b>\$31.10</b>	---	---
¾"	<b>G75-C-AL</b>	<b>10.70</b>	<b>G75-C-BR</b>	<b>20.40</b>	<b>G75-C-SS</b>	<b>\$30.40</b>
1"	<b>G100-C-AL</b>	<b>10.95</b>	<b>G100-C-BR</b>	<b>29.50</b>	<b>G100-C-SS</b>	<b>29.50</b>
1¼"	<b>G125-C-AL</b>	<b>15.50</b>	<b>G125-C-BR</b>	<b>30.25</b>	<b>G125-C-SS</b>	<b>50.35</b>
1½"	<b>G150-C-AL</b>	<b>13.20</b>	<b>G150-C-BR</b>	<b>39.60</b>	<b>G150-C-SS</b>	<b>49.80</b>
2"	<b>G200-C-AL</b>	<b>15.25</b>	<b>G200-C-BR</b>	<b>48.05</b>	<b>G200-C-SS</b>	<b>63.65</b>
2½"	<b>G250-C-AL</b>	<b>25.90</b>	<b>G250-C-BR</b>	<b>70.45</b>	<b>G250-C-SS</b>	<b>86.00</b>
3"	<b>G300-C-AL</b>	<b>23.55</b>	<b>G300-C-BR</b>	<b>90.95</b>	<b>G300-C-SS</b>	<b>125.45</b>
4"	<b>G400-C-AL</b>	<b>36.75</b>	<b>G400-C-BR</b>	<b>132.00</b>	<b>G400-C-SS</b>	<b>173.95</b>
5"	<b>G500-C-AL</b>	<b>103.00</b>	---	---	---	---
6"	<b>G600-C-AL</b>	<b>109.15</b>	---	---	<b>G600-C-SS</b>	<b>406.15</b>
8"	<b>G800-C-AL</b>	<b>500.20</b>	---	---	---	---



female coupler x hose shank

## Global Type D Couplers



female coupler x female NPT

Size	A380 Aluminum		ASTMC38000 Forged Brass		316 Investment Cast Stainless	
	Part #	Price/E	Part #	Price/E	Part #	Price/E
1/2"	<b>G50-D-AL</b>	\$16.35	<b>G50-D-BR</b>	\$29.90	---	---
3/4"	<b>G75-D-AL</b>	12.10	<b>G75-D-BR</b>	22.75	<b>G75-D-SS</b>	\$31.35
1"	<b>G100-D-AL</b>	11.60	<b>G100-D-BR</b>	30.25	<b>G100-D-SS</b>	31.35
1 1/4"	<b>G125-D-AL</b>	16.95	<b>G125-D-BR</b>	35.15	<b>G125-D-SS</b>	52.90
1 1/2"	<b>G150-D-AL</b>	12.90	<b>G150-D-BR</b>	39.20	<b>G150-D-SS</b>	54.70
2"	<b>G200-D-AL</b>	15.05	<b>G200-D-BR</b>	45.35	<b>G200-D-SS</b>	65.60
2 1/2"	<b>G250-D-AL</b>	26.45	<b>G250-D-BR</b>	77.30	<b>G250-D-SS</b>	88.45
3"	<b>G300-D-AL</b>	25.15	<b>G300-D-BR</b>	80.95	<b>G300-D-SS</b>	107.45
4"	<b>G400-D-AL</b>	35.00	<b>G400-D-BR</b>	129.45	<b>G400-D-SS</b>	169.95
5"	<b>G500-D-AL</b>	92.25	---	---	---	---
6"	<b>G600-D-AL</b>	98.45	---	---	<b>G600-D-SS</b>	421.00

## Global Type DC Dust Caps



dust cap

Size	A380 Aluminum		ASTMC38000 Forged Brass		316 Investment Cast Stainless	
	Part #	Price/E	Part #	Price/E	Part #	Price/E
1/2"	<b>G50-DC-AL</b>	\$14.40	<b>G50-DC-BR</b>	\$24.05	---	---
3/4"	<b>G75-DC-AL</b>	10.60	<b>G75-DC-BR</b>	18.10	<b>G75-DC-SS</b>	\$28.45
1"	<b>G100-DC-AL</b>	10.40	<b>G100-DC-BR</b>	22.30	<b>G100-DC-SS</b>	28.80
1 1/4"	<b>G125-DC-AL</b>	14.00	<b>G125-DC-BR</b>	31.25	<b>G125-DC-SS</b>	50.50
1 1/2"	<b>G150-DC-AL</b>	12.70	<b>G150-DC-BR</b>	34.95	<b>G150-DC-SS</b>	48.35
2"	<b>G200-DC-AL</b>	12.40	<b>G200-DC-BR</b>	38.25	<b>G200-DC-SS</b>	56.90
2 1/2"	<b>G250-DC-AL</b>	20.70	<b>G250-DC-BR</b>	44.90	<b>G250-DC-SS</b>	78.45
3"	<b>G300-DC-AL</b>	23.10	<b>G300-DC-BR</b>	69.90	<b>G300-DC-SS</b>	93.60
4"	<b>G400-DC-AL</b>	29.25	<b>G400-DC-BR</b>	97.05	<b>G400-DC-SS</b>	126.05
5"	<b>G500-DC-AL</b>	80.00	---	---	---	---
6"	<b>G600-DC-AL</b>	84.35	---	---	<b>G600-DC-SS</b>	405.95

## Replacement Handle Assemblies for Global Couplers

### For Aluminum and Brass Global Couplers

- Handles supplied complete with ring and pin.



investment stainless



forged brass

Fits on sizes	Investment Stainless		Fits on sizes	Forged Brass	
	Part #	Price/E		Part #	Price/E
3/4"	<b>G75HRP</b>	\$2.70	1 1/4" - 2 1/2"	<b>G152HRP</b>	\$4.05
1"	<b>G100HRP</b>	4.05	3" and 4"	<b>G34HRP</b>	7.10
			6" and 8"	<b>G600HRP</b>	15.73

### For Stainless Steel Global Couplers



investment stainless

Fits on sizes	Investment Stainless	
	Part #	Price/E
3/4"	<b>G75HRPSS</b>	\$4.15
1"	<b>G100HRPSS</b>	4.00
1 1/4" - 2 1/2"	<b>G125250HRPSS</b>	9.35
3" and 4"	<b>G300400HRPSS</b>	9.35
6"	<b>G600HRPSS</b>	20.25

## Safety Clip for Global Couplers



Zinc Plated Carbon Steel

Part #	Price/E
<b>GSAFETYCLIP</b>	\$0.33

## Global Type DD Spool Couplers

Size	Aluminum	
	Part #	Price/E
2"	<b>G200-DD-AL</b>	<b>\$53.95</b>
3"	<b>G300-DD-AL</b>	<b>75.45</b>



## Global Type AA Spool Adapters

Size	A380 Permanent Mold Aluminum	
	Part #	Price/E
1"	<b>G100-AA-AL</b>	<b>\$8.55</b>
1½"	<b>G150-AA-AL</b>	<b>25.00</b>
2"	<b>G200-AA-AL</b>	<b>21.60</b>
3"	<b>G300-AA-AL</b>	<b>50.40</b>
4"	<b>G400-AA-AL</b>	<b>65.80</b>



## Global Jump Size Cam and Groove

male adapter x female NPT

Size	Aluminum	
	Part #	Price/E
3" x 2"	<b>G3020-A-AL</b>	<b>\$42.30</b>
4" x 3"	<b>G4030-A-AL</b>	<b>52.30</b>



G3020-C-AL

male spool adapter

Size	Aluminum	
	Part #	Price/E
1½" x 2"	<b>G1520-AA-AL</b>	<b>\$32.40</b>
2" x 3"	<b>G2030-AA-AL</b>	<b>49.75</b>
3" x 4"	<b>G3040-AA-AL</b>	<b>71.10</b>



G3020-DA-AL

female coupler x hose shank

Size	Aluminum	
	Part #	Price/E
3" x 2"	<b>G3020-C-AL</b>	<b>\$52.95</b>

female coupler x male adapter

Size	Aluminum	
	Part #	Price/E
3" x 2"	<b>G3020-DA-AL</b>	<b>\$58.05</b>
4" x 3"	<b>G4030-DA-AL</b>	<b>83.70</b>



G3020-E-AL

male adapter x hose shank

Size	Aluminum	
	Part #	Price/E
3" x 2"	<b>G3020-E-AL</b>	<b>\$27.85</b>

## Polypropylene Adapters

**SAFETY**  
ALERT

NOT recommended for use with Teflon® gaskets

- Recommended for a maximum working pressure of **125 PSI** (1/2" - 1"), **100 PSI** (1 1/4" - 2") and **75 PSI** (3" - 4"); recommendations based on the use of mating Dixon fittings at an ambient temperature of **70°F** with standard seal installed.
- 1/2" couplers and adapters will interchange with 3/4" couplers and adapters. Only the threads and barbs are 1/2".
- 1 1/4" couplers and adapters will interchange with 1 1/2" couplers and adapters. Only the threads and barbs are 1 1/4".
- Polypropylene cam and groove should not be mixed with metal fittings.
- Adapters are manufactured from a glass-filled polypropylene.

**SAFETY**  
ALERT

- <sup>1</sup> Dust caps and dust plugs are not to be used in pressure applications for safety and environmental reasons.

**SAFETY**  
ALERT



female NPT x male adapter

type A			
Size	Polypropylene		Opt Qty
	Part #	Price/E	
3/4" x 1/2"	<b>PPA50</b>	<b>\$5.20</b>	24
3/4"	<b>PPA75</b>	<b>5.20</b>	24
1"	<b>PPA100</b>	<b>5.65</b>	24
1 1/2" x 1 1/4"	<b>PPA125</b>	<b>5.85</b>	24
1 1/2"	<b>PPA150</b>	<b>6.30</b>	24
2"	<b>PPA200</b>	<b>7.45</b>	24
3"	<b>PPA300</b>	<b>16.70</b>	24
4"	<b>PPA400</b>	<b>27.50</b>	8



male NPT x male adapter

type F			
Size	Polypropylene		Opt Qty
	Part #	Price/E	
3/4" x 1/2"	<b>PPF50</b>	<b>\$5.70</b>	24
3/4"	<b>PPF75</b>	<b>5.70</b>	24
1"	<b>PPF100</b>	<b>6.45</b>	24
1 1/2" x 1 1/4"	<b>PPF125</b>	<b>6.50</b>	24
1 1/2"	<b>PPF150</b>	<b>6.55</b>	24
2"	<b>PPF200</b>	<b>8.60</b>	24
3"	<b>PPF300</b>	<b>21.25</b>	24
4"	<b>PPF400</b>	<b>27.50</b>	8



hose shank x male adapter

type E			
Size	Polypropylene		Opt Qty
	Part #	Price/E	
3/4" x 1/2"	<b>PPE50</b>	<b>\$5.70</b>	24
3/4"	<b>PPE75</b>	<b>5.70</b>	24
1"	<b>PPE100</b>	<b>6.45</b>	24
1 1/2" x 1 1/4"	<b>PPE125</b>	<b>6.50</b>	24
1 1/2"	<b>PPE150</b>	<b>6.55</b>	24
2"	<b>PPE200</b>	<b>8.60</b>	24
3"	<b>PPE300</b>	<b>21.25</b>	24
4"	<b>PPE400</b>	<b>27.50</b>	8



dust plug <sup>1</sup>

type P <sup>1</sup>			
Size	Polypropylene		Opt Qty
	Part #	Price/E	
3/4"	<b>PPP75</b>	<b>\$5.20</b>	24
1"	<b>PPP100</b>	<b>5.65</b>	24
1 1/2"	<b>PPP150</b>	<b>6.25</b>	24
2"	<b>PPP200</b>	<b>9.00</b>	24
3"	<b>PPP300</b>	<b>16.70</b>	24
4"	<b>PPP400</b>	<b>22.00</b>	8



4" plug has a different design

## Polypropylene Adapter Elbows

- Recommended for a maximum working pressure of **100 PSI** (1 1/2" - 2"); recommendations based on the use of mating Dixon fittings at an ambient temperature of **70°F** with standard seal installed.
- Adapter elbows are manufactured from a glass-filled polypropylene.
- For use at elevated temperatures or other unusual operating conditions, consult factory.

**SAFETY**  
ALERT



male adapter x female NPT

90° Elbow x FNPT			
Size	Polypropylene		Opt Qty
	Part #	Price/E	
1 1/2"	<b>90PPA150</b>	<b>\$10.40</b>	24
2"	<b>90PPA200</b>	<b>11.10</b>	24



male adapter x male NPT

90° Elbow x MNPT			
Size	Polypropylene		Opt Qty
	Part #	Price/E	
1 1/2"	<b>90PPF150</b>	<b>\$12.00</b>	24
2"	<b>90PPF200</b>	<b>12.50</b>	24

## Polypropylene Couplers

NOT recommended for use with Teflon® gaskets

**SAFETY**  
ALERT

- Recommended for a maximum working pressure of **125 PSI** (½" - 1"), **100 PSI** (1¼" - 2") and **75 PSI** (3" - 4"); recommendations based on the use of mating Dixon fittings at an ambient temperature of **70°F** with standard seal installed.
- ½" couplers and adapters will interchange with ¾" couplers and adapters. Only the threads and barbs are ½".
- 1¼" couplers and adapters will interchange with 1½" couplers and adapters. Only the threads and barbs are 1¼".
- Polypropylene cam and groove should not be mixed with metal fittings.
- Supplied with EPDM gaskets, 304 stainless steel handles and pins
- Couplers are manufactured from a glass-filled polypropylene.

**SAFETY**  
ALERT

- <sup>1</sup> Dust caps and dust plugs are not to be used in pressure applications for safety and environmental reasons.
- <sup>2</sup> 4" coupler has 3 handles

**SAFETY**  
ALERT

### type D

Size	Polypropylene Part #	Price/E	Opt Qty
¾" x ½"	<b>PPD50</b>	<b>\$14.10</b>	24
	<b>PPD75</b>	<b>14.10</b>	24
	<b>PPD100</b>	<b>16.00</b>	24
1½" x 1¼"	<b>PPD125</b>	<b>19.20</b>	24
	<b>PPD150</b>	<b>19.00</b>	24
	<b>PPD200</b>	<b>22.50</b>	24
3"	<b>PPD300</b>	<b>37.00</b>	24
	<b>PPD400<sup>2</sup></b>	<b>72.50</b>	8



female NPT x female coupler

### type B

Size	Polypropylene Part #	Price/E	Opt Qty
¾" x ½"	<b>PPB50</b>	<b>\$14.10</b>	24
	<b>PPB75</b>	<b>14.10</b>	24
	<b>PPB100</b>	<b>16.00</b>	24
1½" x 1¼"	<b>PPB125</b>	<b>19.20</b>	24
	<b>PPB150</b>	<b>19.00</b>	24
	<b>PPB200</b>	<b>22.50</b>	24
3"	<b>PPB300</b>	<b>37.00</b>	24
	<b>PPB400<sup>2</sup></b>	<b>72.50</b>	8



male NPT x female coupler

### type C

Size	Polypropylene Part #	Price/E	Opt Qty
¾" x ½"	<b>PPC50</b>	<b>\$14.10</b>	24
	<b>PPC75</b>	<b>14.10</b>	24
	<b>PPC100</b>	<b>16.00</b>	24
1½" x 1¼"	<b>PPC125</b>	<b>19.20</b>	24
	<b>PPC150</b>	<b>19.00</b>	24
	<b>PPC200</b>	<b>22.50</b>	24
3"	<b>PPC300</b>	<b>37.00</b>	24
	<b>PPC400<sup>2</sup></b>	<b>72.50</b>	8



hose shank x female coupler

### type H<sup>1</sup>

Size	Polypropylene Part #	Price/E	Opt Qty
¾"	<b>PPH75</b>	<b>\$13.60</b>	24
	<b>PPH100</b>	<b>15.50</b>	24
1½"	<b>PPH150</b>	<b>19.00</b>	24
	<b>PPH200</b>	<b>22.50</b>	24
3"	<b>PPH300</b>	<b>37.00</b>	24
	<b>PPH400<sup>2</sup></b>	<b>52.75</b>	8



dust cap<sup>1</sup>



4" cap has 3 handles

locking handle pictured is only available in 1¼" thru 2"

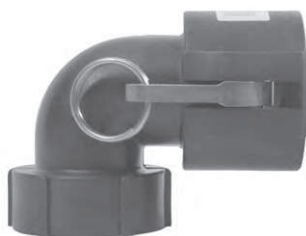
## Polypropylene Coupler Elbows

- Recommended for a maximum working pressure of **100 PSI** (1½" - 2"); recommendations based on the use of mating Dixon fittings at an ambient temperature of **70°F** with standard seal installed.
- Coupler elbows are manufactured from a glass-filled polypropylene.
- Supplied with EPDM gaskets, 304 stainless steel handles and pins.
- For use at elevated temperatures or other unusual operating conditions, consult factory.

**SAFETY**  
ALERT

### FNPT x 90° Elbow

Size	Polypropylene Part #	Price/E	Opt Qty
1½"	<b>90PPD150</b>	<b>\$22.20</b>	24
2"	<b>90PPD200</b>	<b>26.25</b>	24



female NPT x female coupler

### Hose Shank x 90° Elbow

Size	Polypropylene Part #	Price/E	Opt Qty
1½"	<b>90PPC150</b>	<b>\$22.20</b>	24
2"	<b>90PPC200</b>	<b>26.25</b>	24



hose shank x female coupler



## Replacement Parts for Polypropylene Cam & Groove

### Handles



1¼", 1½", 2"



½", ¾", 1", 3", 4"

Used on sizes	430 Stainless Steel	
	Part #	Price/E
½"	61594	\$4.20
¾"	61594	4.20
1"	61594	4.20
1¼"	61595	5.50
1½"	61595	5.50
2"	61595	5.50
3"	61596	9.20
4"	61596	9.20

### Gaskets



Used on sizes	EPDM	
	Part #	Price/E
½"	61570	\$1.20
¾"	61570	1.20
1"	61571	1.20
1¼"	61572	1.85
1½"	61572	1.85
2"	61574	2.10
3"	61575	2.30
4"	62797	9.40

### Key Rings



Used on sizes	304 Stainless Steel	
	Part #	Price/E
½"	61589	\$1.40
¾"	61589	1.40
1"	61589	1.40
1¼"	61589	1.40
1½"	61589	1.40
2"	61589	1.40
3"	61589	1.40
4"	61589	1.40

### Cam Handle Pins



Used on sizes	304 Stainless Steel	
	Part #	Price/E
½"	61582	\$1.30
¾"	61582	1.30
1"	61582	1.30
1¼"	61585	1.75
1½"	61585	1.75
2"	61585	1.75
3"	61584	2.50
4"	61584	2.50

### Safety Clips



Used on sizes	304 Stainless Steel	
	Part #	Price/E
1¼"	63545	\$1.10
1½"	63545	1.10
2"	63545	1.10



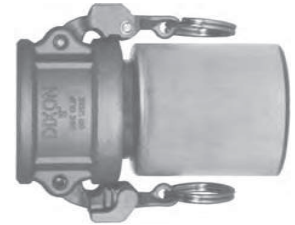
## Swaged Cam and Groove

- Developed specifically for chemical transport hoses having Crosslinked Polyethylene (XLPE) or Ultra High Molecular Weight Polyethylene (UHMW) tubes. Swaged Boss-Lock provides you with a permanently attached cam and groove fitting when superior coupling retention is required.
- In testing tank transport hoses from a wide variety of manufacturers, the swaged Boss-Lock fitting proved itself to be the clear winner in overall performance.
- Fittings are also available on special order for other sizes or hose OD's. Consult the factory for pricing and availability.
- Consult the factory for pricing and availability of the *special equipment required for installation* or refer to page 391.

**SAFETY**  
ALERT

### EZ Boss-Lock type C coupler with ferrule

Size	Hose OD		316 Stainless Steel	
	from	to	Part #	Price/E
¾"	1-6/64"	1-22/64"	<b>RC075EZ-70</b>	<b>\$130.70</b>
1"	1-29/64"	1-35/64"	<b>RC100EZ-20</b>	<b>137.10</b>
1"	1-36/64"	1-44/64"	<b>RC100EZ-70</b>	<b>141.40</b>



coupler x hose shank with ferrule

### Boss-Lock type E adapter with ferrule

Size	Hose OD		316 Stainless Steel	
	from	to	Part #	Price/E
¾"	1-6/64"	1-22/64"	<b>RE075-1370</b>	<b>\$91.50</b>
1"	1-29/64"	1-35/64"	<b>RE100-1620</b>	<b>69.00</b>
1"	1-36/64"	1-44/64"	<b>RE100-1770</b>	<b>76.30</b>



adapter x hose shank with ferrule

## Notched Ferrules

Size	Hose OD		304 Stainless Steel	
	from	to	Part #	Price/E
1½"	1-60/64"	2-12/64"	<b>GAS2334NO</b>	<b>\$34.80</b>
1½"	2-4/64"	2-22/64"	<b>GAS2370NO</b>	<b>37.20</b>
2"	2-30/64"	2-44/64"	<b>GAS2709NO</b>	<b>31.80</b>
2"	2-42/64"	2-54/64"	<b>GAS2885NO</b>	<b>66.25</b>
3"	3-30/64"	3-46/64"	<b>GAS3760NO</b>	<b>45.40</b>
3"	3-47/64"	3-54/64"	<b>GAS3885NO</b>	<b>62.10</b>
4"	4-40/64"	4-47/64"	<b>GAS5010NO</b>	<b>258.75</b>



Dixon stems and ferrules are specifically designed to be used together as a coupling system.

Due to differences in dimensions and tolerances for safety reasons,  
do not use other manufacturer's stems or ferrules with Dixon Holedall products.

**SAFETY**  
ALERT

## Notched Cam and Groove

- The largest advantage of the notched EZ Boss-Lock design is that the coupling can be removed from a damaged hose by cutting away the ferrule, without necessarily damaging the fitting. *After inspection of the fitting to determine its suitability for reuse, it can be reinstalled into another hose by using a new ferrule.* **SAFETY ALERT**
- The notched EZ Boss-Lock system allows you to better manage your inventories. You can stock one coupling and two ferrules, and cover the same hose range with less inventory. *You must purchase a fitting and the matching ferrule to create an assembly.* **SAFETY ALERT**
- for use with notched ferrules on previous page

Dixon stems and ferrules are specifically designed to be used together as a coupling system.

**SAFETY**  
ALERT

Due to differences in dimensions and tolerances for safety reasons, do not use other manufacturer's stems or ferrules with Dixon products.

### Couplers

#### EZ Boss-Lock type C with notched shank



female coupler x  
notched hose shank

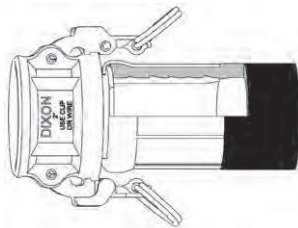
Size	316 Stainless Steel	
	Part #	Price/E
1½"	<b>RC150EZNO</b>	<b>\$113.75</b>
2"	<b>RC200EZNO</b>	<b>121.30</b>
3"	<b>RC300EZNO</b>	<b>208.20</b>
4"	<b>RC400EZNO</b>	<b>310.85</b>

#### Boss-Lock type C with notched shank



female coupler x  
notched hose shank

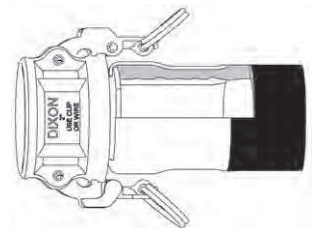
Size	316 Stainless Steel	
	Part #	Price/E
1½"	<b>RC150BLNO</b>	<b>\$111.70</b>
2"	<b>RC200BLNO</b>	<b>113.40</b>
3"	<b>RC300BLNO</b>	<b>199.40</b>
4"	<b>RC400BLNO</b>	<b>288.70</b>



crimped assembly

**SAFETY**  
ALERT

Contact the factory for swage  
and crimp recommendations.



swaged assembly

### Adapters

#### Boss-Lock type E with notched shank



male adapter x  
notched hose shank

Size	316 Stainless Steel	
	Part #	Price/E
1½"	<b>RE150NO</b>	<b>\$61.00</b>
2"	<b>RE200NO</b>	<b>63.10</b>
3"	<b>RE300NO</b>	<b>122.20</b>
4"	<b>RE400NO</b>	<b>246.90</b>



swaged assembly

**SAFETY**  
ALERT

Contact the factory for swage  
and crimp recommendations.



crimped assembly

## Dixon Cam and Groove with Notched NOS Shank

- The largest advantage of the notched design is that the coupling can be removed from a damaged hose by cutting away the ferrule, without necessarily damaging the fitting. *After inspection of the fitting to determine its suitability for reuse, it can be reinstalled into another hose by using a new ferrule.* **SAFETY ALERT**
- The notched system allows you to better manage your inventories. You can stock one stem and two ferrules, and cover the same hose range with less inventory. *You must purchase a fitting and the matching ferrule to create an assembly.* **SAFETY ALERT**
- For hose outside diameters of 2-4/64" and below, *the couplings are crimp only.* **SAFETY ALERT**
- For hose outside diameters of 2-5/64" and above, the couplings can be crimped or swaged.
- See pages 262 and 396 for male NPT notched NOS fittings.
- for use with notched ferrules at bottom of the page

**Only use the NOS shank with the NOS ferrules.**  
Due to differences in dimensions and tolerances for safety reasons, do not use other manufacturer's stems or ferrules with Dixon products.

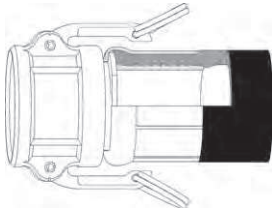
**SAFETY  
ALERT**

### Couplers

#### Dixon type C with NOS shank

Size	316 Stainless Steel		Price/E
	Part #		
1½"	<b>150CNOSSS</b>	<sup>1</sup>	<b>\$80.00</b>
2"	<b>200CNOSSS</b>		<b>85.10</b>
3"	<b>300CNOSSS</b>		<b>168.90</b>

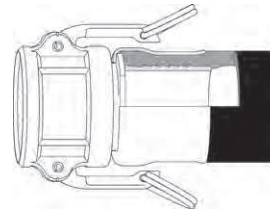
<sup>1</sup>part will be discontinued as stock is depleted



crimped assembly

**SAFETY  
ALERT**

Contact the factory for swage and crimp recommendations.



swaged assembly



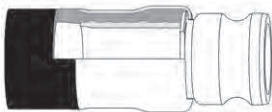
female coupler x notched NOS hose shank

### Adapters

#### type E with NOS shank

Size	316 Stainless Steel		Price/E
	Part #		
1½"	<b>150ENOSSS</b>	<sup>1</sup>	<b>\$38.00</b>
2"	<b>200ENOSSS</b>		<b>50.60</b>
3"	<b>300ENOSSS</b>		<b>101.00</b>

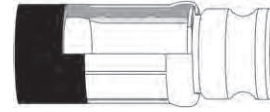
<sup>1</sup>part will be discontinued as stock is depleted



swaged assembly

**SAFETY  
ALERT**

Contact the factory for swage and crimp recommendations.



crimped assembly



male adapter x notched NOS hose shank

### Notched NOS Ferrules

Size	Hose OD		Carbon Steel		304 Stainless Steel	
	From:	To:	Part #	Price/E	Part #	Price/E
1½"	1-60/64"	2-12/64"	<b>CAS2334NOS</b>	<b>\$16.70</b>	<b>GAS2334NOS</b>	<b>\$31.90</b>
1½"	2-4/64"	2-22/64"	<b>CAS2370NOS</b>	<b>16.70</b>	<b>GAS2370NOS</b>	<b>34.50</b>
2"	2-30/64"	2-44/64"	<b>CAS2709NOS</b>	<b>23.05</b>	<b>GAS2709NOS</b>	<b>31.50</b>
2"	2-42/64"	2-54/64"	<b>CAS2885NOS</b>	<b>22.40</b>	<b>GAS2885NOS</b>	<b>64.40</b>
3"	3-30/64"	3-46/64"	<b>CAS3760NOS</b>	<b>34.60</b>	<b>GAS3760NOS</b>	<b>46.35</b>
3"	3-47/64"	3-54/64"	<b>CAS3885NOS</b>	<b>35.30</b>	<b>GAS3885NOS</b>	<b>63.00</b>



## Crimp Style Domestic Cam and Groove

**SAFETY**  
ALERT

Only use the crimp style shanks with the crimp style sleeves and ferrules.  
Due to differences in dimensions and tolerances for safety reasons, do not  
interchange other manufacturer's products with Dixon products.

**SAFETY**  
ALERT

### Dixon Type C Couplers



Hose ID	356T6 Aluminum		Brass		316 Stainless Steel	
	Part #	Price	Part #	Price	Part #	Price
1"	100-C-AL	\$23.60	100-C-BR	\$55.75	100-C-SS	\$79.30
1½"	150-C-AL	30.60	150-C-BR	78.00	150-C-SS	96.60
2"	200-C-AL	34.65	200-C-BR	95.10	200-C-SS	112.00
3"	300-C-AL	54.50	300-C-BR	173.80	300-C-SS	198.70
4"	400-C-AL	75.85	400-C-BR	230.00	400-C-SS	320.00
6"	600-C-AL	184.70	600-C-BR	750.00	600-C-SS	501.90

### EZ Boss-Lock Type C Couplers



Hose ID	316 Stainless Steel	
	Part #	Price
1"	RC100EZCR	\$110.80
1½"	RC150EZCR	113.75
2"	RC200EZCR	121.30
3"	RC300EZCR	208.20
4"	RC400EZCR	310.85
6"	RC600EZCR	590.00

### Type E Adapters



Hose ID	356T6 Aluminum		Brass		316 Stainless Steel	
	Part #	Price	Part #	Price	Part #	Price
1"	100-E-AL	\$12.50	100-E-BR	\$36.00	100-E-SS	\$51.00
1½"	150-E-AL	17.55	150-E-BR	55.00	150-E-SS	66.90
2"	200-E-AL	21.40	200-E-BR	76.00	200-E-SS	68.50
3"	300-E-AL	35.25	300-E-BR	127.00	300-E-SS	127.80
4"	400-E-AL	68.90	400-E-BR	219.95	400-E-SS	278.00
6"	600-E-AL	135.90	600-E-BR	530.00	600-E-SS	538.00

## Crimp Style Global Cam and Groove

### Type C Couplers



Hose ID	A380 Permanent Mold Aluminum		ASTMC 3800 Forged Brass		316 Investment Cast Stainless	
	Part #	Price	Part #	Price	Part #	Price
1"	G100-C-ALCR	\$14.05	G100-C-BRCR	\$29.90	G100-C-SSCR	\$36.60
1½"	G150-C-ALCR	19.45	G150-C-BRCR	45.30	G150-C-SSCR	55.45
2"	G200-C-ALCR	22.95	G200-C-BRCR	58.50	G200-C-SSCR	77.40
3"	G300-C-ALCR	37.50	G300-C-BRCR	120.90	G300-C-SSCR	140.15
4"	G400-C-ALCR	51.85	G400-C-BRCR	167.70	G400-C-SSCR	181.70

### Type E Adapters



Hose ID	A380 Permanent Mold Aluminum		ASTMC 3800 Forged Brass		316 Investment Cast Stainless	
	Part #	Price	Part #	Price	Part #	Price
1"	G100-E-ALCR	\$7.55	G100-E-BRCR	\$22.00	G100-E-SSCR	\$28.40
1½"	G150-E-ALCR	11.45	G150-E-BRCR	36.00	G150-E-SSCR	44.95
2"	G200-E-ALCR	13.95	G200-E-BRCR	50.00	G200-E-SSCR	61.90
3"	G300-E-ALCR	23.45	G300-E-BRCR	105.20	G300-E-SSCR	117.95
4"	G400-E-ALCR	37.20	G400-E-BRCR	147.95	G400-E-SSCR	167.15



# Crimp Style Sleeves

Only use the crimp style shanks with the crimp style sleeves and ferrules. Due to differences in dimensions and tolerances for safety reasons, do not interchange other manufacturer's products with Dixon products.



Hose ID	Hose OD		Carbon Steel		304 Stainless Steel		Aluminum		Work. Press. <sup>1</sup>	Sleeve ID	Sleeve Wall Thickness	Sleeve Overall Length	
	From	To	Part #	Price	Part #	Price	Part #	Price					
1"	1 13/64	1 16/64	CS100-1CS	4.70	CS100-1SS	7.15	---	---	*	1.313	.062	2 1/2"	
	1 17/64	1 20/64	CS100-2CS	4.70	CS100-2SS	7.15	CS100-2AL	\$7.60	*	1.375	.062	2 1/2"	
	1 21/64	1 24/64	CS100-3CS	4.70	CS100-3SS	7.15	---	---	*	1.438	.062	2 1/2"	
	1 25/64	1 28/64	CS100-4CS	4.70	CS100-4SS	7.15	CS100-4AL	7.60	*	1.500	.062	2 1/2"	
	1 29/64	1 32/64	CS100-5CS	4.70	CS100-5SS	7.15	---	---	*	1.563	.062	2 1/2"	
	1 33/64	1 36/64	CS100-6CS	4.70	CS100-6SS	7.15	CS100-6AL	7.60	*	1.625	.062	2 1/2"	
	1 37/64	1 40/64	CS100-7CS	4.70	CS100-7SS	7.15	---	---	*	1.688	.062	2 1/2"	
	1 41-64	1 44/64	CS100-8CS	4.70	CS100-8SS	7.15	---	---	*	1.750	.062	2 1/2"	
	1 45/64	1 48/64	CS100-9CS	4.70	CS100-9SS	7.15	---	---	*	1.813	.062	2 1/2"	
	1 49/64	1 52/64	CS100-10CS	4.70	CS100-10SS	7.15	---	---	*	1.875	.062	2 1/2"	
1 1/2"	1 41/64	1 44/64	CS150-1CS	4.85	CS150-1SS	8.50	---	---	250	1.750	.062	2 1/2"	
	1 45/64	1 48/64	CS150-2CS	4.85	CS150-2SS	8.50	---	---	250	1.813	.062	2 1/2"	
	1 49/64	1 52/64	CS150-3CS	4.85	CS150-3SS	8.50	CS150-3AL	10.00	250	1.875	.062	2 1/2"	
	1 53/64	1 56/64	CS150-4CS	4.85	CS150-4SS	8.50	---	---	250	1.938	.062	2 1/2"	
	1 57/64	1 60/64	CS150-5CS	4.85	CS150-5SS	8.50	---	---	250	2.000	.062	2 1/2"	
	1 61/64	2	CS150-6CS	4.85	CS150-6SS	8.50	---	---	250	2.063	.062	2 1/2"	
	2 1/64	2 4/64	CS150-7CS	4.85	CS150-7SS	8.50	CS150-7AL	10.00	250	2.125	.062	2 1/2"	
	2 5/64	2 8/64	CS150-8CS	4.85	CS150-8SS	8.50	---	---	250	2.188	.062	2 1/2"	
	2 9/64	2 12/64	CS150-9CS	4.85	CS150-9SS	8.50	---	---	250	2.250	.062	2 1/2"	
	2 13/64	2 16/64	CS150-10CS	4.85	CS150-10SS	8.50	---	---	250	2.313	.062	2 1/2"	
	2 17/64	2 20/64	CS150-11CS	4.85	CS150-11SS	8.50	---	---	250	2.375	.062	2 1/2"	
	2 21/64	2 24/64	CS150-12CS	4.85	CS150-12SS	8.50	---	---	250	2.438	.062	2 1/2"	
	2"	2 13/64	2 16/64	CS200-1CS	6.05	CS200-1SS	12.75	---	---	250	2.313	.062	2-7/8"
		2 17/64	2 20/64	CS200-2CS	6.05	CS200-2SS	12.75	---	---	250	2.375	.062	2-7/8"
2 21/64		2 24/64	CS200-3CS	6.05	CS200-3SS	12.75	---	---	250	2.438	.062	2-7/8"	
2 25/64		2 28/64	CS200-4CS	6.05	CS200-4SS	12.75	CS200-4AL	12.70	250	2.500	.062	2-7/8"	
2 29/64		2 32/64	CS200-5CS	6.05	CS200-5SS	12.75	---	---	250	2.563	.062	2-7/8"	
2 33/64		2 36/64	CS200-6CS	6.05	CS200-6SS	12.75	---	---	250	2.625	.062	2-7/8"	
2 37/64		2 40/64	CS200-7CS	6.05	CS200-7SS	12.75	---	---	250	2.688	.062	2-7/8"	
2 41/64		2 44/64	CS200-8CS	6.05	CS200-8SS	12.75	---	---	250	2.750	.062	2-7/8"	
2 45/64		2 48/64	CS200-9CS	6.05	CS200-9SS	12.75	---	---	250	2.813	.062	2-7/8"	
2 49/64		2 52/64	CS200-10CS	6.05	CS200-10SS	12.75	CS200-10AL	12.70	250	2.875	.062	2-7/8"	
2 53/64		2 56/64	CS200-11CS	6.05	CS200-11SS	12.75	---	---	250	2.938	.062	2-7/8"	
2 57/64		2 60/64	CS200-12CS	6.05	CS200-12SS	12.75	---	---	250	3.000	.062	2-7/8"	
3"		3 13/64	3 16/64	CS300-1CS	10.75	CS300-1SS	18.20	---	---	125	3.313	.090	3 3/4"
		3 17/64	3 20/64	CS300-2CS	10.75	CS300-2SS	18.20	---	---	125	3.375	.090	3 3/4"
	3 21/64	3 24/64	CS300-3CS	10.75	CS300-3SS	18.20	---	---	125	3.438	.090	3 3/4"	
	3 25/64	3 28/64	CS300-4CS	10.75	CS300-4SS	18.20	---	---	125	3.500	.090	3 3/4"	
	3 29/64	3 32/64	CS300-5CS	10.75	CS300-5SS	18.20	---	---	125	3.563	.090	3 3/4"	
	3 33/64	3 36/64	CS300-6CS	10.75	CS300-6SS	18.20	---	---	125	3.625	.090	3 3/4"	
	3 37/64	3 40/64	CS300-7CS	10.75	CS300-7SS	18.20	---	---	125	3.688	.090	3 3/4"	
	3 41/64	3 44/64	CS300-8CS	10.75	CS300-8SS	18.20	---	---	125	3.750	.090	3 3/4"	
	3 45/64	3 48/64	CS300-9CS	10.75	CS300-9SS	18.20	---	---	125	3.813	.090	3 3/4"	
	3 49/64	3 52/64	CS300-10CS	10.75	CS300-10SS	18.20	---	---	125	3.875	.090	3 3/4"	
	3 53/64	3 56/64	CS300-11CS	10.75	CS300-11SS	18.20	---	---	125	3.938	.090	3 3/4"	
	3 57/64	3 60/64	CS300-12CS	10.75	CS300-12SS	18.20	---	---	125	4.000	.090	3 3/4"	
	3 61/64	4	CS300-13CS	10.75	CS300-13SS	18.20	---	---	125	4.063	.090	3 3/4"	
	4 1/64	4 4/64	CS300-14CS	10.75	CS300-14SS	18.20	---	---	125	4.125	.090	3 3/4"	
	4 5/64	4 8/64	CS300-15CS	10.75	CS300-15SS	18.20	---	---	125	4.188	.090	3 3/4"	
	4 9/64	4 12/64	CS300-16CS	10.75	CS300-16SS	18.20	---	---	125	4.250	.090	3 3/4"	
4"	4 13/64	4 16/64	CS400-1CS	14.40	CS400-1SS	30.30	---	---	110	4.313	.090	3 3/4"	
	4 17/64	4 20/64	CS400-2CS	14.40	CS400-2SS	30.30	---	---	110	4.375	.090	3 3/4"	
	4 21/64	4 24/64	CS400-3CS	14.40	CS400-3SS	30.30	---	---	110	4.438	.090	3 3/4"	
	4 25/64	4 28/64	CS400-4CS	14.40	CS400-4SS	30.30	---	---	110	4.500	.090	3 3/4"	
	4 29/64	4 32/64	CS400-5CS	14.40	CS400-5SS	30.30	---	---	110	4.563	.090	3 3/4"	
	4 33/64	4 36/64	CS400-6CS	14.40	CS400-6SS	30.30	---	---	110	4.625	.090	3 3/4"	
	4 37/64	4 40/64	CS400-7CS	14.40	CS400-7SS	30.30	---	---	110	4.688	.090	3 3/4"	
	4 41/64	4 44/64	CS400-8CS	14.40	CS400-8SS	30.30	---	---	110	4.750	.090	3 3/4"	
	4 45/64	4 48/64	CS400-9CS	14.40	CS400-9SS	30.30	---	---	110	4.813	.090	3 3/4"	
	4 49/64	4 52/64	CS400-10CS	14.40	CS400-10SS	30.30	---	---	110	4.875	.090	3 3/4"	
	4 53/64	4 56/64	CS400-11CS	14.40	CS400-11SS	30.30	---	---	110	4.938	.090	3 3/4"	
	4 57/64	4 60/64	CS400-12CS	14.40	CS400-12SS	30.30	---	---	110	5.000	.090	3 3/4"	
	4 61/64	5	CS400-13CS	14.40	CS400-13SS	30.30	---	---	110	5.063	.090	3 3/4"	
	5 1/64	5 4/64	CS400-14CS	14.40	CS400-14SS	30.30	---	---	110	5.125	.090	3 3/4"	
	5 5/64	5 8/64	CS400-15CS	14.40	CS400-15SS	30.30	---	---	110	5.188	.090	3 3/4"	
	5 9/64	5 12/64	CS400-16CS	14.40	CS400-16SS	30.30	---	---	110	5.250	.090	3 3/4"	
6"	6 21/64	6 28/64	CS600-1CS	37.90	CS600-1SS	72.75	---	---	*	6.500	.120	5 1/2"	
	6 29/64	6 36/64	CS600-2CS	37.90	CS600-2SS	72.75	---	---	*	6.625	.120	5 1/2"	
	6 37/64	6 44/64	CS600-3CS	37.90	CS600-3SS	72.75	---	---	*	6.750	.120	5 1/2"	
	6 45/64	6 52/64	CS600-4CS	37.90	CS600-4SS	72.75	---	---	*	6.875	.120	5 1/2"	
	6 53/64	6 60/64	CS600-5CS	37.90	CS600-5SS	72.75	---	---	*	7.000	.120	5 1/2"	
	6 61/64	7 4/64	CS600-6CS	37.90	CS600-6SS	72.75	---	---	*	7.125	.120	5 1/2"	
	7 5/64	7 12/64	CS600-7CS	37.90	CS600-7SS	72.75	---	---	*	7.250	.120	5 1/2"	
	7 13/64	7 20/64	CS600-8CS	37.90	CS600-8SS	72.75	---	---	*	7.375	.120	5 1/2"	
	7 21/64	7 28/64	CS600-9CS	37.90	CS600-9SS	72.75	---	---	*	7.500	.120	5 1/2"	

\* consult factory for pressure rating

<sup>1</sup> based on using crimp cam and groove nipples

# Crimp Style Ferrules



Only use the crimp style shanks with the crimp style sleeves and ferrules. Due to differences in dimensions and tolerances for safety reasons, do not interchange other manufacturer's products with Dixon products.

**SAFETY ALERT**

Crowder Supply Co., Inc. • 8495 Roslyn St., Commerce City, CO 80022 • Toll Free: 888-883-5144 • www.CrowderSupply.com

Hose ID	Hose OD		Carbon Steel		304 Stainless Steel		Work. Press. <sup>1</sup>	Ferrule ID	Ferrule Wall Thickness	Ferrule Overall Length	
	From	To	Part #	Price	Part #	Price					
1"	1 13/64	1 16/64	CF100-1CS	\$10.00	CF100-1SS	\$10.15	*	1.313	.062	2-13/16"	
	1 17/64	1 20/64	CF100-2CS	10.00	CF100-2SS	10.15	*	1.375	.062	2-13/16"	
	1 21/64	1 24/64	CF100-3CS	10.00	CF100-3SS	10.15	*	1.438	.062	2-13/16"	
	1 25/64	1 28/64	CF100-4CS	10.00	CF100-4SS	10.15	*	1.500	.062	2-13/16"	
	1 29/64	1 32/64	CF100-5CS	10.00	CF100-5SS	10.15	*	1.563	.062	2-13/16"	
	1 33/64	1 36/64	CF100-6CS	10.00	CF100-6SS	10.15	*	1.625	.062	2-13/16"	
	1 37/64	1 40/64	CF100-7CS	10.00	CF100-7SS	10.15	*	1.688	.062	2-13/16"	
	1 41/64	1 44/64	CF100-8CS	10.00	CF100-8SS	10.15	*	1.750	.062	2-13/16"	
	1 45/64	1 48/64	CF100-9CS	10.00	CF100-9SS	10.15	*	1.813	.062	2-13/16"	
	1 49/64	1 52/64	CF100-10CS	10.00	CF100-10SS	10.15	*	1.875	.062	2-13/16"	
	1 1/2"	1 41/64	1 44/64	CF150-1CS	11.40	CF150-1SS	15.60	250	1.750	.062	2-13/16"
		1 45/64	1 48/64	CF150-2CS	11.40	CF150-2SS	15.60	250	1.813	.062	2-13/16"
		1 49/64	1 52/64	CF150-3CS	11.40	CF150-3SS	15.60	250	1.875	.062	2-13/16"
		1 53/64	1 56/64	CF150-4CS	11.40	CF150-4SS	15.60	250	1.938	.062	2-13/16"
1 57/64		1 60/64	CF150-5CS	11.40	CF150-5SS	15.60	250	2.000	.062	2-13/16"	
1 61/64		2	CF150-6CS	11.40	CF150-6SS	15.60	250	2.063	.062	2-13/16"	
2 1/64		2 4/64	CF150-7CS	11.40	CF150-7SS	15.60	250	2.125	.062	2-13/16"	
2 5/64		2 8/64	CF150-8CS	11.40	CF150-8SS	15.60	250	2.188	.062	2-13/16"	
2 9/64		2 12/64	CF150-9CS	11.40	CF150-9SS	15.60	250	2.250	.062	2-13/16"	
2 13/64		2 16/64	CF150-10CS	11.40	CF150-10SS	15.60	250	2.313	.062	2-13/16"	
2 17/64		2 20/64	CF150-11CS	11.40	CF150-11SS	15.60	250	2.375	.062	2-13/16"	
2 21/64		2 24/64	CF150-12CS	11.40	CF150-12SS	15.60	250	2.438	.062	2-13/16"	
2"		2 13/64	2 16/64	CF200-1CS	13.80	CF200-1SS	18.80	250	2.313	.062	3-1/8"
		2 17/64	2 20/64	CF200-2CS	13.80	CF200-2SS	18.80	250	2.375	.062	3-1/8"
	2 21/64	2 24/64	CF200-3CS	13.80	CF200-3SS	18.80	250	2.438	.062	3-1/8"	
	2 25/64	2 28/64	CF200-4CS	13.80	CF200-4SS	18.80	250	2.500	.062	3-1/8"	
	2 29/64	2 32/64	CF200-5CS	13.80	CF200-5SS	18.80	250	2.563	.062	3-1/8"	
	2 33/64	2 36/64	CF200-6CS	13.80	CF200-6SS	18.80	250	2.625	.062	3-1/8"	
	2 37/64	2 40/64	CF200-7CS	13.80	CF200-7SS	18.80	250	2.688	.062	3-1/8"	
	2 41/64	2 44/64	CF200-8CS	13.80	CF200-8SS	18.80	250	2.750	.062	3-1/8"	
	2 45/64	2 48/64	CF200-9CS	13.80	CF200-9SS	18.80	250	2.813	.062	3-1/8"	
	2 49/64	2 52/64	CF200-10CS	13.80	CF200-10SS	18.80	250	2.875	.062	3-1/8"	
	2 53/64	2 56/64	CF200-11CS	13.80	CF200-11SS	18.80	250	2.938	.062	3-1/8"	
	2 57/64	2 60/64	CF200-12CS	13.80	CF200-12SS	18.80	250	3.000	.062	3-1/8"	
	3"	3 13/64	3 16/64	CF300-1CS	18.80	CF300-1SS	30.60	150	3.313	.090	4"
		3 17/64	3 20/64	CF300-2CS	18.80	CF300-2SS	30.60	150	3.375	.090	4"
3 21/64		3 24/64	CF300-3CS	18.80	CF300-3SS	30.60	150	3.438	.090	4"	
3 25/64		3 28/64	CF300-4CS	18.80	CF300-4SS	30.60	150	3.500	.090	4"	
3 29/64		3 32/64	CF300-5CS	18.80	CF300-5SS	30.60	150	3.563	.090	4"	
3 33/64		3 36/64	CF300-6CS	18.80	CF300-6SS	30.60	150	3.625	.090	4"	
3 37/64		3 40/64	CF300-7CS	18.80	CF300-7SS	30.60	150	3.688	.090	4"	
3 41/64		3 44/64	CF300-8CS	18.80	CF300-8SS	30.60	150	3.750	.090	4"	
3 45/64		3 48/64	CF300-9CS	18.80	CF300-9SS	30.60	150	3.813	.090	4"	
3 49/64		3 52/64	CF300-10CS	18.80	CF300-10SS	30.60	150	3.875	.090	4"	
3 53/64		3 56/64	CF300-11CS	18.80	CF300-11SS	30.60	150	3.938	.090	4"	
3 57/64		3 60/64	CF300-12CS	18.80	CF300-12SS	30.60	150	4.000	.090	4"	
3 61/64		4	CF300-13CS	18.80	CF300-13SS	30.60	150	4.063	.090	4"	
4 1/64		4 4/64	CF300-14CS	18.80	CF300-14SS	30.60	150	4.125	.090	4"	
4 5/64	4 8/64	CF300-15CS	18.80	CF300-15SS	30.60	150	4.188	.090	4"		
4 9/64	4 12/64	CF300-16CS	18.80	CF300-16SS	30.60	150	4.250	.090	4"		
4"	4 13/64	4 16/64	CF400-1CS	25.00	CF400-1SS	71.20	150	4.313	.090	4"	
	4 17/64	4 20/64	CF400-2CS	25.00	CF400-2SS	71.20	150	4.375	.090	4"	
	4 21/64	4 24/64	CF400-3CS	25.00	CF400-3SS	71.20	150	4.438	.090	4"	
	4 25/64	4 28/64	CF400-4CS	25.00	CF400-4SS	71.20	150	4.500	.090	4"	
	4 29/64	4 32/64	CF400-5CS	25.00	CF400-5SS	71.20	150	4.563	.090	4"	
	4 33/64	4 36/64	CF400-6CS	25.00	CF400-6SS	71.20	150	4.625	.090	4"	
	4 37/64	4 40/64	CF400-7CS	25.00	CF400-7SS	71.20	150	4.688	.090	4"	
	4 41/64	4 44/64	CF400-8CS	25.00	CF400-8SS	71.20	150	4.750	.090	4"	
	4 45/64	4 48/64	CF400-9CS	25.00	CF400-9SS	71.20	150	4.813	.090	4"	
	4 49/64	4 52/64	CF400-10CS	25.00	CF400-10SS	71.20	150	4.875	.090	4"	
	4 53/64	4 56/64	CF400-11CS	25.00	CF400-11SS	71.20	150	4.938	.090	4"	
	4 57/64	4 60/64	CF400-12CS	25.00	CF400-12SS	71.20	150	5.000	.090	4"	
	4 61/64	5	CF400-13CS	25.00	CF400-13SS	71.20	150	5.063	.090	4"	
	5 1/64	5 4/64	CF400-14CS	25.00	CF400-14SS	71.20	150	5.125	.090	4"	
5 5/64	5 8/64	CF400-15CS	25.00	CF400-15SS	71.20	150	5.188	.090	4"		
5 9/64	5 12/64	CF400-16CS	25.00	CF400-16SS	71.20	150	5.250	.090	4"		
6"	6 21/64	6 28/64	CF600-1CS	52.25	CF600-1SS	85.00	*	6.500	.120	5-7/8"	
	6 29/64	6 36/64	CF600-2CS	52.25	CF600-2SS	85.00	*	6.625	.120	5-7/8"	
	6 37/64	6 44/64	CF600-3CS	52.25	CF600-3SS	85.00	*	6.750	.120	5-7/8"	
	6 45/64	6 52/64	CF600-4CS	52.25	CF600-4SS	85.00	*	6.875	.120	5-7/8"	
	6 53/64	6 60/64	CF600-5CS	52.25	CF600-5SS	85.00	*	7.000	.120	5-7/8"	
	6 61/64	7 4/64	CF600-6CS	52.25	CF600-6SS	85.00	*	7.125	.120	5-7/8"	
	7 5/64	7 12/64	CF600-7CS	52.25	CF600-7SS	85.00	*	7.250	.120	5-7/8"	
	7 13/64	7 20/64	CF600-8CS	52.25	CF600-8SS	85.00	*	7.375	.120	5-7/8"	
	7 21/64	7 28/64	CF600-9CS	52.25	CF600-9SS	85.00	*	7.500	.120	5-7/8"	

\* consult factory for pressure rating  
<sup>1</sup> based on using crimp cam and groove nipples



## Boss-Lock PF Cam and Groove

- The shank design on these fittings was developed specifically for chemical transport hoses having Crosslinked Polyethylene (XLPE) or Ultra High Molecular Weight Polyethylene (UHMW) tubes, where shank retention can be a problem when using conventional band clamps. In testing tank transport hoses from a wide variety of manufacturers, the Boss-Lock-PF fitting showed significant improvement in hose coupling retention over the conventional cam and groove shank design.
- Other sizes are available on special order. Consult the factory for pricing and availability.
- For best results we recommend the use of 3/4" wide band clamps found on pages 349 and 350.



female coupler x PF hose shank

### EZ Boss-Lock type C coupler x special hose shank

Size	316 Stainless Steel		Opt Qty
	Part #	Price/E	
2"	<b>RC200EZPF</b>	<b>\$178.10</b>	10
3"	<b>RC300EZPF</b>	<b>252.30</b>	5

### type E adapter x special hose shank

Size	316 Stainless Steel		Opt Qty
	Part #	Price/E	
2"	<b>RE200PF</b>	<b>\$107.10</b>	10



male adapter x PF hose shank

## Cam and Groove Hydrant Adapters

- Pin lugs allow for easy connection using standard spanner and hydrant wrenches (pages 502 and 503).
- supplied with a Buna-N washer in the threaded end

Female NST Thread	Male Adapter	Brass		Aluminum	
		Part #	Price/E	Part #	Price/E
1½"	1½"	<b>HA1515ADP</b>	<b>\$75.50</b>	<b>AHA1515ADP</b>	<b>\$40.25</b>
2½"	2½"	<b>HA2525ADP</b>	<b>83.30</b>	<b>AHA2525ADP</b>	<b>50.00</b>



female NST x male adapter

## Replacement Washers

ID	OD	Thickness	Buna-N Part #	Price/E
1-9/16"	2-1/16"	1/8"	<b>SW150</b>	<b>\$2.00</b>
2-9/16"	3-3/16"	3/16"	<b>SW250</b>	<b>3.15</b>

## Dixon Tank Car Adapters

- standard 5" Railroad Tank Car thread
- supplied with a Buna-N gasket in the threaded end, see below for other gasket types



railroad thread x male adapter

Size	Aluminum		Brass		Iron		316 Stainless Steel	
	Part #	Price/E	Part #	Price/E	Part #	Price/E	Part #	Price/E
2"	<b>200-TCA-AL</b>	\$117.50	---	---	---	---	<b>200-TCA-SS</b>	\$693.00
3"	<b>300-TCA-AL</b>	103.80	<b>300-TCA-BR</b>	\$350.00	<b>300-TCA-MI</b>	\$257.00	<b>300-TCA-SS</b>	737.40
4"	<b>400-TCA-AL</b>	119.10	<b>400-TCA-BR</b>	410.00	---	---	<b>400-TCA-SS</b>	815.00

**SAFETY ALERT** Stainless steel adapters are not compatible with the aluminum and brass adapters.



swivel railroad thread x 45° male adapter

- standard 5" Railroad Tank Car thread
- 45° tank car swivel adapter
- unit has a long handle brass swivel nut and a swivel retaining ring
- supplied with a Buna-N gasket in the threaded end, see below for other gasket types

Size	Aluminum	
	Part #	Price/E
4"	<b>40A-45TCAL</b>	\$441.00

## Dixon Railroad Tank Car Gaskets

### Old Style

- for use with Dixon fittings

Size	OD	ID	THK	Material	Part #	Price/E
5"	5-1/4"	3-1/2"	3/16"	leather	<b>G9</b>	\$15.00

### Standard

- for use with Dixon fittings

standard

Size	OD	ID	THK	Material	Part #	Price/E
5"	5-1/4"	3-7/8"	1/8"	Buna-N	<b>500GTCABU</b>	\$6.30
5"	5-1/4"	3-7/8"	1/8"	Viton®	<b>500GTCAVI</b>	51.25
5"	5-1/4"	3-7/8"	1/8"	fuel grade Buna	<b>500GTCABF</b>	6.00

### Teflon® Envelope

- for use with Dixon fittings
- may be too thick for insertion in some older Dixon fittings

Teflon® envelope

Size	OD	ID	THK	Material	Part #	Price/E
5"	5-1/4"	3-13/16"	3/16"	Teflon® with Buna-N filler	<b>500GTCATF</b>	\$63.90
5"	5-1/4"	3-13/16"	3/16"	Teflon® with Viton® filler	<b>500GTCATV</b>	112.00

### Pin Lug

- used on aluminum and iron tank car nuts



Iron	
Part #	Price/E
<b>G10</b>	\$110.00

### Wrenches

### Long Handle

- used on stainless steel tank car nuts



Iron	
Part #	Price/E
<b>LHW</b>	\$360.85

## Railroad Tank Car Connections

- all swivel nuts have standard 5" Railroad Tank Car Thread
- supplied with a Buna-N gasket in the threaded end, other gasket types are available on previous page
- Tank car connections are also available in other materials and in 2" and 2½" sizes. Consult factory for pricing and availability.

### Style S

- shank is 20° below horizontal

Shank Size	Swivel Nut	Iron		Aluminum	
		Part #	Price/E	Part #	Price/E
3"	5"	<b>TCS30</b>	<b>\$250.00</b>	<b>ATCS30</b>	<b>\$268.50</b>
4"	5"	<b>TCS40</b>	<b>275.00</b>	<b>ATCS40</b>	<b>334.50</b>



railroad thread swivel nut  
x 20° hose shank

### Style T

- 3" threaded end is 30° below horizontal
- 4" threaded end is 20° below horizontal

Male NPT	Swivel Nut	Iron		Aluminum	
		Part #	Price/E	Part #	Price/E
3"	5"	<b>TCT30</b>	<b>\$258.00</b>	<b>ATCT30</b>	<b>\$283.90</b>
4"	5"	<b>TCT40</b>	<b>310.00</b>	<b>ATCT40</b>	<b>350.00</b>



railroad thread swivel nut  
x 30° male NPT

### Style T

- Stainless steel railroad tank car connections are not compatible with aluminum and brass.
- 3" threaded end is 30° below horizontal
- 4" threaded end is 20° below horizontal

**SAFETY**  
ALERT

Male NPT	Swivel Nut	316 Stainless Steel	
		Part #	Price/E
3"	5"	<b>RTCT30</b>	<b>\$665.00</b>
4"	5"	<b>RTCT40</b>	<b>780.00</b>



railroad thread swivel nut  
x 20° male NPT

### Style A

- Stainless steel railroad tank car connections are not compatible with aluminum and brass.
- adapter is 20° below horizontal

**SAFETY**  
ALERT

Adapter	Swivel Nut	316 Stainless Steel	
		Part #	Price/E
3"	5"	<b>RTCA30</b>	<b>\$815.00</b>
4"	5"	<b>RTCA40</b> <sup>1</sup>	<b>998.00</b>



railroad thread swivel nut  
x 20° adapter

<sup>1</sup> Parts are produced as a welded fabrication.

### Style F

- for transloading bio and other fuels
- 4" TTMA flange can be bolted to sight glass or API adapter or other dry disconnect
- 4" flange end is 20° below horizontal

TTMA Flange	Swivel Nut	Aluminum	
		Part #	Price/E
4"	5"	<b>ATCF40</b> <sup>1</sup>	<b>\$708.00</b>



<sup>1</sup> Part is produced as a welded fabrication.

## Cam and Groove x Cam and Groove Elbows

- Couplers are supplied standard with a Buna-N gasket, other gasket types are available on pages 65-66.

### 45° Elbows



male adapter x female coupler

#### adapter x coupler

Size	Aluminum		316 Stainless Steel	
	Part #	Price/E	Part #	Price/E
2"	<b>200DA-45AL</b> <sup>1</sup>	<b>\$142.00</b>	<b>200DA-45SS</b> <sup>1</sup>	<b>\$483.00</b>
3"	<b>300DA-45AL</b>	<b>180.00</b>	<b>300DA-45SS</b> <sup>1</sup>	<b>715.00</b>
4"	<b>400DA-45AL</b>	<b>239.95</b>	<b>400DA-45SS</b> <sup>1</sup>	<b>960.00</b>
6"	<b>600DA-45AL</b>	<b>543.00</b>	---	---

<sup>1</sup> Parts are produced as a welded fabrication.



female coupler x female coupler

#### coupler x coupler

Size	Aluminum		316 Stainless Steel	
	Part #	Price/E	Part #	Price/E
2"	<b>200DD-45AL</b>	<b>\$157.00</b>	---	--
3"	<b>300DD-45AL</b>	<b>380.00</b>	<b>300DD-45SS</b>	<b>\$599.00</b>
4"	<b>400DD-45AL</b>	<b>374.80</b>	---	--
6"	<b>600DD-45AL</b>	<b>670.00</b>	---	--

• Parts are produced as a welded fabrication.

### 90° Elbows



male adapter x female coupler

#### adapter x coupler

Size	Aluminum		316 Stainless Steel	
	Part #	Price/E	Part #	Price/E
1"	---	---	<b>100DA-90SS</b> <sup>1</sup>	<b>\$350.00</b>
1½"	<b>150DA-90AL</b> <sup>1</sup>	<b>\$120.00</b>	<b>150DA-90SS</b> <sup>1</sup>	<b>390.00</b>
2"	<b>200DA-90AL</b>	<b>90.95</b>	<b>200DA-90SS</b>	<b>365.00</b>
3"	<b>300DA-90AL</b>	<b>148.50</b>	<b>300DA-90SS</b>	<b>715.00</b>
4"	<b>400DA-90AL</b>	<b>232.80</b>	<b>400DA-90SS</b>	<b>795.00</b>
5"	<b>500DA-90AL</b> <sup>1</sup>	<b>1425.00</b>	---	---
6"	<b>600DA-90AL</b>	<b>481.25</b>	<b>RDA90600EZ</b> <sup>1,2</sup>	<b>2300.00</b>

<sup>1</sup> Parts are produced as a welded fabrication.

<sup>2</sup> EZ Boss-Lock design (not pictured)



female coupler x female coupler

#### coupler x coupler

Size	Aluminum		316 Stainless Steel	
	Part #	Price/E	Part #	Price/E
2"	<b>200DD-90AL</b>	<b>\$174.40</b>	---	---
3"	<b>300DD-90AL</b>	<b>363.45</b>	<b>300DD-90SS</b>	<b>\$565.00</b>
4"	<b>400DD-90AL</b>	<b>185.95</b>	---	---
6"	<b>600DD-90AL</b>	<b>772.50</b>	---	---

• Parts are produced as a welded fabrication.

## Cam and Groove Elbows

### Type A

- Pressure rating is based on the seal of the mating part. See ratings on page 16.

#### male adapter x female NPT 90° elbow

Size	Aluminum		316 Stainless Steel	
	Part #	Price/E	Part #	Price/E
1½"	<b>150A-90AL</b>	<b>\$70.45</b>	---	---
2"	<b>200A-90AL</b>	<b>68.10</b>	<b>200A-90SS</b> <sup>1</sup>	<b>\$439.80</b>
3"	<b>300A-90AL</b>	<b>119.25</b>	<b>300A-90SS</b>	<b>475.50</b>
4"	<b>400A-90AL</b>	<b>212.50</b>	---	---



male adapter x female NPT

<sup>1</sup> Part is produced as a welded fabrication.

### Type D

- Couplers are supplied standard with a Buna-N gasket, other gasket types are available on pages 65-66.

#### female coupler x female NPT 90° elbow

Size	Aluminum		Brass		316 Stainless Steel	
	Part #	Price/E	Part #	Price/E	Part #	Price/E
1"	---	---	---	---	<b>100D-90SS</b>	<b>\$200.00</b>
1¼"	---	---	<b>125D-90BR</b>	<b>\$134.10</b>	---	---
1½"	<b>150D-90AL</b>	<b>\$75.60</b>	<b>150D-90BR</b>	<b>118.00</b>	---	---
2"	<b>200D-90AL</b>	<b>68.30</b>	<b>200D-90BR</b>	<b>149.40</b>	<b>200D-90SS</b>	<b>217.35</b>
3"	<b>300D-90AL</b>	<b>105.00</b>	---	---	<b>300D-90SS</b>	<b>592.00</b>
4"	<b>400D-90AL</b>	<b>142.00</b>	---	---	<b>400D-90SS</b> <sup>1</sup>	<b>1015.00</b>
4"	<b>AD90400EZ</b> <sup>2</sup>	<b>235.00</b>	---	---	---	---
6"	<b>600D-90AL</b>	<b>336.00</b>	---	---	---	---



female coupler x female NPT

<sup>1</sup> Part is produced as a welded fabrication.

<sup>2</sup> EZ Boss-Lock design (not pictured)

### Type E

- Pressure rating is based on the seal of the mating part. See ratings on page 16.

#### male adapter x hose shank 90° elbow

Size	Aluminum		316 Stainless Steel	
	Part #	Price/E	Part #	Price/E
2"	---	---	<b>200E-90SS</b> <sup>1</sup>	<b>\$504.00</b>
3"	<b>300E-90AL</b>	<b>\$139.75</b>	<b>300E-90SS</b>	<b>564.00</b>
4"	<b>400E-90AL</b>	<b>169.50</b>	<b>400E-90SS</b> <sup>1</sup>	<b>882.00</b>



male adapter x hose shank

<sup>1</sup> Parts are produced as a welded fabrication.

### Type C

- Couplers are supplied standard with a Buna-N gasket, other gasket types are available on pages 65-66.

#### female coupler x hose shank 90° elbow

Size	Aluminum		Brass		316 Stainless Steel	
	Part #	Price/E	Part #	Price/E	Part #	Price/E
1¼"	---	---	<b>125C-90BR</b>	<b>\$150.00</b>	---	---
1½"	<b>150C-90AL</b>	<b>\$69.50</b>	---	---	<b>150C-90SS</b>	<b>\$367.50</b>
2"	<b>200C-90AL</b>	<b>66.80</b>	<b>200C-90BR</b>	<b>149.60</b>	<b>200C-90SS</b>	<b>355.35</b>
3"	<b>300C-90AL</b>	<b>99.95</b>	---	---	<b>300C-90SS</b>	<b>551.00</b>
4"	<b>400C-90AL</b>	<b>187.00</b>	---	---	<b>400C-90SS</b> <sup>1</sup>	<b>975.00</b>
6"	<b>600C-90AL</b>	<b>478.95</b>	---	---	---	---



female coupler x hose shank

<sup>1</sup> Part is produced as a welded fabrication.



## Cam and Groove Elbows

### Type F

- Pressure rating is based on the seal of the mating part. See ratings on page 16.

#### male adapter x male NPT 90° elbow



male adapter x male NPT

Size	Aluminum		316 Stainless Steel	
	Part #	Price/E	Part #	Price/E
1½"	<b>150F-90AL</b>	<b>\$58.75</b>	---	---
2"	<b>200F90AL</b>	<b>88.75</b>	<b>200F-90SS</b> <sup>1</sup>	<b>\$430.00</b>
3"	---	---	<b>300F-90SS</b> <sup>1</sup>	<b>765.00</b>

<sup>1</sup> Parts are produced as a welded fabrication.

### Type B

- Couplers are supplied standard with a Buna-N gasket, other gasket types are available on pages 65-66.

#### female coupler x male NPT 90° elbow



female coupler x male NPT

Size	Aluminum		316 Stainless Steel	
	Part #	Price/E	Part #	Price/E
1½"	<b>150B-90AL</b>	<b>\$74.20</b>	---	---
2"	<b>200B-90AL</b>	<b>85.00</b>	<b>200B-90SS</b> <sup>1</sup>	<b>\$490.00</b>
3"	---	---	<b>300B-90SS</b> <sup>1</sup>	<b>675.00</b>

<sup>1</sup> Parts are produced as a welded fabrication.

## Reducing Cam and Groove Couplings

In reducing couplings, the cam and groove end is the first size given in the part number. (i.e., a 4030-C-AL is a 4" coupler to a 3" hose shank).

### Type A

- Pressure rating is based on the seal of the mating part. See ratings on page 16.

#### male adapter x female NPT

Size	Aluminum		Opt Qty	316 Stainless Steel		Opt Qty
	Part #	Price/E		Part #	Price/E	
2" x 1½"	<b>2015-A-AL</b>	<b>\$44.40</b>	--	<b>2015-A-SS</b> <sup>1</sup>	<b>\$201.70</b>	--
2" x 3"	<b>2030-A-AL</b>	<b>60.25</b>	10	<b>2030-A-SS</b>	<b>220.00</b>	10
3" x 2"	<b>3020-A-AL</b>	<b>56.40</b>	5	<b>3020-A-SS</b>	<b>289.80</b>	10
3" x 4"	<b>3040-A-AL</b>	<b>69.95</b>	10	---	---	--
4" x 3"	<b>4030-A-AL</b>	<b>68.00</b>	10	<b>4030-A-SS</b> <sup>1</sup>	<b>458.80</b>	--
4" x 6"	<b>4060-A-AL</b>	<b>187.20</b>	5	---	---	--
6" x 4"	<b>6040-A-AL</b>	<b>198.30</b>	5	<b>6040-A-SS</b> <sup>1</sup>	<b>985.00</b>	--



reducing  
male adapter x female NPT

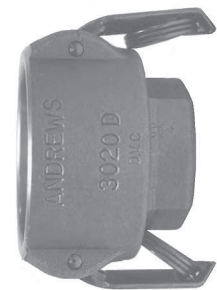
<sup>1</sup> Parts are produced as a welded fabrication.

### Type D

- Couplers are supplied standard with a Buna-N gasket, other gasket types are available on pages 65-66.

#### female coupler x female NPT

Size	Aluminum		Opt Qty	Brass		316 Stainless Steel	
	Part #	Price/E		Part #	Price/E	Part #	Price/E
1½" x 1"	<b>1510-D-AL</b> <sup>1</sup>	<b>\$65.70</b>	10	---	---	<b>1510-D-SS</b> <sup>1</sup>	<b>\$306.00</b>
2" x 1½"	<b>2015-D-AL</b>	<b>45.15</b>	10	---	---	<b>2015-D-SS</b>	<b>205.50</b>
3" x 2"	<b>3020-D-AL</b>	<b>84.70</b>	10	---	---	<b>3020-D-SS</b>	<b>345.50</b>
4" x 3"	<b>4030-D-AL</b>	<b>123.90</b>	10	<b>4030-D-BR</b>	<b>\$300.00</b>	<b>4030-D-SS</b> <sup>1</sup>	<b>498.00</b>
5" x 4"	<b>5040-D-AL</b> <sup>1</sup>	<b>342.00</b>	--	---	---	---	---
6" x 4"	<b>6040-D-AL</b> <sup>1</sup>	<b>404.00</b>	--	---	---	---	---



reducing  
female coupler x female NPT

<sup>1</sup> Parts are produced as a welded fabrication.

### Type E

- Pressure rating is based on the seal of the mating part. See ratings on page 16.

#### male adapter x hose shank

Size	Aluminum		Opt Qty	316 Stainless Steel	
	Part #	Price/E		Part #	Price/E
2" x 1½"	<b>2015-E-AL</b> <sup>1</sup>	<b>\$175.00</b>	--	<b>2015-E-SS</b> <sup>1</sup>	<b>\$202.80</b>
3" x 2"	---	---	--	<b>3020-E-SS</b> <sup>1</sup>	<b>385.00</b>
3" x 2½"	---	---	--	<b>3025-E-SS</b>	<b>199.00</b>
4" x 3"	<b>4030-E-AL</b>	<b>86.80</b>	10	<b>4030-E-SS</b> <sup>1</sup>	<b>550.00</b>
5" x 4"	<b>5040-E-AL</b> <sup>1</sup>	<b>324.45</b>	--	---	---



reducing  
male adapter x hose shank

<sup>1</sup> Parts are produced as a welded fabrication.

### Type C

- Couplers are supplied standard with a Buna-N gasket, other gasket types are available on pages 65-66.

#### female coupler x hose shank

Size	Aluminum		Opt Qty	316 Stainless Steel	
	Part #	Price/E		Part #	Price/E
2" x 1½"	<b>2015-C-AL</b> <sup>1</sup>	<b>\$175.35</b>	--	<b>2015-C-SS</b> <sup>1</sup>	<b>\$332.80</b>
3" x 2"	<b>3020-C-AL</b>	<b>70.45</b>	10	<b>3020-C-SS</b>	<b>342.80</b>
3" x 2½"	---	---	--	<b>3025-C-SS</b>	<b>389.30</b>
3" x 4"	<b>3040-C-AL</b>	<b>122.95</b>	5	---	---
4" x 3"	<b>4030-C-AL</b>	<b>93.10</b>	5	<b>4030-C-SS</b> <sup>1</sup>	<b>595.00</b>
5" x 4"	<b>5040-C-AL</b> <sup>1</sup>	<b>355.95</b>	--	---	---



reducing  
female coupler x hose shank

<sup>1</sup> Parts are produced as a welded fabrication.

## Reducing Cam and Groove Couplings

In reducing couplings, the cam and groove end is the first size given in the part number. (i.e., a 4030-B-AL is a 4" coupler to a 3" male NPT).

### Type F

- Pressure rating is based on the seal of the mating part. See ratings on page 16.

#### male adapter x male NPT



reducing  
male adapter x male NPT

Size	Aluminum		Opt Qty	316 Stainless Steel	
	Part #	Price/E		Part #	Price/E
1½" x 2"	<b>1520-F-AL</b>	<b>\$44.00</b>	--	---	---
2" x 1½"	<b>2015-F-AL</b>	<b>45.30</b>	--	<b>2015-F-SS</b> <sup>1</sup>	<b>\$398.00</b>
2" x 3"	<b>2030-F-AL</b>	<b>69.00</b>	--	---	---
3" x 1½"	<b>3015-F-AL</b>	<b>60.10</b>	10	<b>3015-F-SS</b> <sup>1</sup>	<b>418.00</b>
3" x 2"	<b>3020-F-AL</b>	<b>64.25</b>	10	<b>3020-F-SS</b>	<b>410.00</b>
3" x 4"	<b>3040-F-AL</b>	<b>83.30</b>	10	---	---
4" x 3"	<b>4030-F-AL</b>	<b>88.90</b>	10	<b>4030-F-SS</b> <sup>1</sup>	<b>600.00</b>

<sup>1</sup> Parts are produced as a welded fabrication.

### Type B

- Couplers are supplied standard with a Buna-N gasket, other gasket types are available on pages 65-66.

#### female coupler x male NPT



reducing  
female coupler x male NPT

Size	Aluminum		Opt Qty	316 Stainless Steel	
	Part #	Price/E		Part #	Price/E
1½" x 1"	<b>1510-B-AL</b>	<b>\$64.80</b>	10	<b>1510-B-SS</b> <sup>1</sup>	<b>\$310.00</b>
2" x 1½"	<b>2015-B-AL</b>	<b>63.40</b>	10	<b>2015-B-SS</b> <sup>1</sup>	<b>362.00</b>
2" x 3"	<b>2030-B-AL</b>	<b>76.30</b>	--	---	---
3" x 2"	<b>3020-B-AL</b>	<b>78.50</b>	10	<b>3020-B-SS</b> <sup>1</sup>	<b>358.00</b>
3" x 4"	<b>3040-B-AL</b>	<b>107.60</b>	10	---	---
4" x 3"	<b>4030-B-AL</b>	<b>121.10</b>	5	<b>4030-B-SS</b> <sup>1</sup>	<b>495.00</b>

<sup>1</sup> Parts are produced as a welded fabrication.

## Adapters and Couplers with Straight Pipe Thread (NPSM)

- for delivery of dry goods
- Cork buna gaskets are standard in threaded end.  
Replacement gasket; **400GAGFI, \$4.30**
- Pressure rating is based on the seal of the mating part. See ratings on page 16.

#### adapter x NPSM thread



Size	Aluminum	
	Part #	Price/E
4"	<b>400-AS-AL</b>	<b>\$83.60</b>

- Coupler is supplied standard with a Buna-N gasket, other gasket types are available on pages 65-66.

#### Boss-Lock coupler x NPSM thread



Size	Aluminum	
	Part #	Price/E
4"	<b>ADS400</b>	<b>\$97.65</b>

## Dixon Reducing Cam and Groove Couplings

In reducing cam and groove couplings, the coupler is the first size in the part number; (i.e., a 4030-DA-AL is a 4" coupler to a 3" adapter).

- Couplers are supplied standard with a Buna-N gasket, other gasket types are available on pages 65-66.

### coupler x adapter

Size	Aluminum			316 Stainless Steel	
	Part #	Price/E	Opt Qty	Part #	Price/E
1" x 1½"	1015-DA-AL <sup>1</sup>	\$156.90	--	1015-DA-SS <sup>1</sup>	\$309.00
1½" x 1"	1510DAAL	68.20	--	1510-DA-SS <sup>1</sup>	315.00
1½" x 2"	1520-DA-AL	85.90	10	1520-DA-SS	369.00
2" x 1"	2010-DA-AL <sup>1</sup>	152.50	--	2010-DA-SS <sup>1</sup>	251.60
2" x 1½"	2015-DA-AL	60.00	10	2015-DA-SS	272.00
2" x 2½"	2025-DA-AL <sup>1</sup>	152.80	--	2025-DA-SS <sup>1</sup>	525.00
2" x 3"	2030-DA-AL	75.20	5	2030-DA-SS	291.70
2" x 4"	2040-DA-AL	116.50	--	2040-DA-SS <sup>1</sup>	495.00
2½" x 2"	---	---	--	2520-DA-SS <sup>1</sup>	540.00
2½" x 3"	---	---	--	2530-DA-SS <sup>1</sup>	640.25
3" x 1½"	3015-DA-AL	90.00	--	3015-DA-SS <sup>1</sup>	398.00
3" x 2"	3020-DA-AL	73.75	10	3020-DA-SS	285.30
3" x 2½"	3025-DA-AL <sup>1</sup>	154.35	--	3025-DA-SS <sup>1</sup>	490.00
3" x 4"	3040-DA-AL	107.10	5	3040-DA-SS	788.00
3" x 6"	3060-DA-AL <sup>1</sup>	255.15	--	3060-DA-SS <sup>1</sup>	719.00
4" x 2"	4020-DA-AL	107.50	5	4020-DA-SS <sup>1</sup>	561.00
4" x 2½"	4025-DA-AL	162.00	--	4025-DA-SS <sup>1</sup>	732.00
4" x 3"	4030-DA-AL	111.40	5	4030-DA-SS	535.00
4" x 5"	4050-DA-AL	226.80	2	---	---
4" x 6"	4060-DA-AL	191.30	2	4060-DA-SS <sup>1</sup>	1097.00
5" x 3"	5030-DA-AL <sup>1</sup>	278.00	2	5030-DA-SS <sup>1</sup>	725.00
5" x 4"	5040-DA-AL	187.20	2	5040-DA-SS <sup>1</sup>	780.00
5" x 6"	5060-DA-AL <sup>1</sup>	399.00	--	5060-DA-SS	950.00
6" x 3"	6030-DA-AL	204.70	2	6030-DA-SS <sup>1</sup>	1158.75
6" x 4"	6040-DA-AL	194.25	2	6040-DA-SS	1200.00
6" x 5"	6050-DA-AL	331.35	--	6050-DA-SS <sup>1</sup>	1300.00
8" x 6"	8060-DA-AL <sup>1,2</sup>	1100.00	--	---	---



3" coupler x 1½" adapter



4" coupler x 6" adapter



3" coupler x 2½" adapter



5" coupler x 6" adapter

<sup>1</sup> Parts are produced as a welded fabrication.

<sup>2</sup> The 8" coupler has 4 cam arms and *does not interchange*.

**SAFETY**  
ALERT

Size	Brass		Opt Qty	Iron		Opt Qty
	Part #	Price/E		Part #	Price/E	
3" x 2"	3020-DA-BR	\$295.00	10	3020-DA-MI	\$121.90	10
3" x 4"	3040-DA-BR	395.00	5	---	---	--
4" x 3"	4030-DA-BR	340.00	2	4030-DA-MI	204.20	--
6" x 4"	6040-DA-BR	695.00	--	6040-DA-MI	440.00	--

## Reducing Coupler x Adapter with Port

Size	Tap Size	316 Stainless Steel	
		Part #	Price/E
3" x 2"	1/4"	3020DAT25SS	\$354.00
3" x 2"	3/8"	3020DAT38SS	354.00
3" x 2"	1/2"	3020DAT50SS	354.00
3" x 2"	3/4"	3020DAT75SS	354.00



port on lug

## Boss-Lock Reducing Cam and Groove Couplings

In reducing cam and groove couplings, the coupler is the first size in the part number; (i.e., a ADA4030 is a 4" coupler to a 3" adapter).

- Couplers are supplied standard with a Buna-N gasket, other gasket types are available on pages 65-66.



3" coupler x 2" adapter

### coupler x adapter

Size	Aluminum		316 Stainless Steel		Opt Qty
	Part #	Price/E	Part #	Price/E	
2" x 3"	ADA2030 <sup>1</sup>	\$182.00	RDA2030BL <sup>1</sup>	\$405.00	10
2½" x 2"	ADA2520 <sup>1</sup>	163.20	---	---	--
2½" x 3"	ADA2530 <sup>1</sup>	275.00	---	---	--
3" x 2"	ADA3020	88.00	RDA3020BL	375.00	10
3" x 4"	ADA3040 <sup>1</sup>	215.00	RDA3040BL <sup>1</sup>	400.00	10
4" x 2"	ADA4020 <sup>1</sup>	240.00	RDA4020BL <sup>1</sup>	639.10	10
4" x 3"	ADA4030	138.60	RDA4030BL	599.00	10
6" x 4"	ADA6040 <sup>1</sup>	523.00	---	---	--
8" x 6"	ADA8060 <sup>1,2</sup>	1100.00	---	---	--

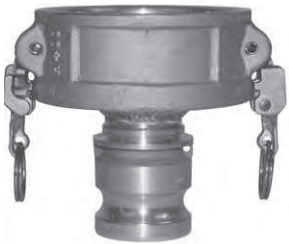
<sup>1</sup> Parts are produced as a welded fabrication.

<sup>2</sup> The 8" coupler does not interchange. **SAFETY ALERT**

## EZ Boss-Lock Reducing Cam and Groove Couplings

In reducing cam and groove couplings, the coupler is the first size in the part number; (i.e., a ADA4030EZ is a 4" coupler to a 3" adapter).

- Couplers are supplied standard with a Buna-N gasket, other gasket types are available on pages 65-66.



4" coupler x 2" adapter

### coupler x adapter

Size	Aluminum		316 Stainless Steel	
	Part #	Price/E	Part #	Price/E
2" x 3"	ADA2030EZ <sup>1</sup>	\$211.50	RDA2030EZ <sup>1</sup>	\$411.95
3" x 2"	ADA3020EZ	137.20	RDA3020EZ	385.80
3" x 4"	ADA3040EZ <sup>1</sup>	249.10	RDA3040EZ <sup>1</sup>	433.60
4" x 2"	ADA4020EZ <sup>1</sup>	294.70	RDA4020EZ <sup>1</sup>	630.00
4" x 3"	ADA4030EZ	194.25	RDA4030EZ	595.00
6" x 4"	ADA6040EZ <sup>1</sup>	565.00	RDA6040EZ	647.00

<sup>1</sup> Parts are produced as a welded fabrication.

## Dixon Lockable Dust Caps

- Couplers are supplied standard with a Buna-N gasket, other gasket types are available on pages 65-66.
- Dust caps and dust plugs are not to be used in pressure applications for safety and environmental reasons. **SAFETY ALERT**



Size	Aluminum		Opt Qty	Brass		Opt Qty
	Part #	Price/E		Part #	Price/E	
1½"	150DC-LAL	\$48.25	10	150DC-LBR	\$94.50	10
2"	200DC-LAL	50.75	10	200DC-LBR	90.60	10
3"	300DC-LAL	63.90	10	300DC-LBR	115.50	10
4"	400DC-LAL	84.10	10	---	---	---
6"	600DC-LAL	203.00	2	---	---	--

- with angled, ergonomic thumb release



Size	316 Stainless Steel	
	Part #	Price/E
1½"	150DC-LSS	\$119.00
2"	200DC-LSS	163.40
3"	300DC-LSS	197.00
4"	400DC-LSS	256.90



## Dixon Spool Adapters

- Pressure rating is based on the seal of the mating part. See ratings on page 16.

### adapter x adapter

Size	Aluminum		316 Stainless Steel	
	Part #	Price/E	Part #	Price/E
1"	---	---	<b>100-AA-SS</b>	<b>\$102.90</b>
1¼"	---	---	<b>125-AA-SS</b> <sup>1</sup>	<b>350.00</b>
1½"	<b>150-AA-AL</b>	<b>\$33.60</b>	<b>150-AA-SS</b>	<b>111.80</b>
1½" x 2"	<b>1520-AA-AL</b>	<b>42.60</b>	<b>1520-AA-SS</b>	<b>176.00</b>
2"	<b>200-AA-AL</b>	<b>41.25</b>	<b>200-AA-SS</b>	<b>160.00</b>
2" x 3"	<b>2030-AA-AL</b>	<b>64.50</b>	<b>2030-AA-SS</b>	<b>218.00</b>
2" x 4"	<b>2040-AA-AL</b>	<b>109.50</b>	<b>2040-AA-SS</b> <sup>1</sup>	<b>446.00</b>
2½" x 3"	<b>2530-AA-AL</b> <sup>1</sup>	<b>210.00</b>	<b>2530-AA-SS</b> <sup>1</sup>	<b>560.00</b>
2½" x 4"	<b>2540-AA-AL</b> <sup>1</sup>	<b>290.00</b>	---	---
3"	<b>300-AA-AL</b>	<b>65.20</b>	<b>300-AA-SS</b>	<b>261.30</b>
3" x 4"	<b>3040-AA-AL</b>	<b>94.50</b>	<b>3040-AA-SS</b> <sup>1</sup>	<b>494.00</b>
4"	<b>400-AA-AL</b>	<b>85.95</b>	<b>400-AA-SS</b>	<b>359.80</b>
4" x 5"	<b>4050-AA-AL</b>	<b>127.30</b>	---	---
4" x 6"	<b>4060-AA-AL</b>	<b>217.35</b>	<b>4060-AA-SS</b> <sup>1</sup>	<b>995.00</b>
5"	<b>500-AA-AL</b> <sup>1</sup>	<b>270.00</b>	<b>500-AA-SS</b> <sup>1</sup>	<b>850.00</b>
5" x 6"	<b>5060-AA-AL</b> <sup>1</sup>	<b>398.00</b>	---	---
6"	<b>600-AA-AL</b>	<b>229.80</b>	<b>600-AA-SS</b> <sup>1</sup>	<b>970.80</b>

Size	Brass	
	Part #	Price/E
2"	<b>200-AA-BR</b>	<b>\$123.75</b>
3"	<b>300-AA-BR</b>	<b>235.00</b>



increaser / reducer



same size

<sup>1</sup> Parts are produced as a welded fabrication.

## Dixon Spool Couplers

- Couplers are supplied standard with a Buna-N gasket, other gasket types are available on pages 65-66.

### coupler x coupler

Size	Aluminum		316 Stainless Steel	
	Part #	Price/E	Part #	Price/E
1½"	---	---	<b>150-DD-SS</b> <sup>1</sup>	<b>\$288.75</b>
2"	<b>200-DD-AL</b>	<b>\$67.70</b>	<b>200-DD-SS</b>	<b>196.25</b>
2" x 3"	<b>2030-DD-AL</b>	<b>110.00</b>	<b>2030-DD-SS</b>	<b>324.00</b>
3"	<b>300-DD-AL</b>	<b>89.75</b>	<b>300-DD-SS</b>	<b>302.30</b>
3" x 4"	<b>3040-DD-AL</b>	<b>124.50</b>	<b>3040-DD-SS</b> <sup>1</sup>	<b>710.00</b>
4"	<b>400-DD-AL</b>	<b>127.00</b>	<b>400-DD-SS</b> <sup>1</sup>	<b>780.00</b>
4" x 5"	<b>4050-DD-AL</b> <sup>1</sup>	<b>395.20</b>	<b>4050-DD-SS</b> <sup>1</sup>	<b>780.00</b>
4" x 6"	<b>4060-DD-AL</b> <sup>1</sup>	<b>357.00</b>	<b>4060-DD-SS</b>	<b>782.00</b>
5"	<b>500-DD-AL</b> <sup>1</sup>	<b>449.00</b>	<b>500-DD-SS</b>	<b>999.00</b>
6"	<b>600-DD-AL</b> <sup>1</sup>	<b>540.00</b>	---	---



reducer / increaser



same size

<sup>1</sup> Parts are produced as a welded fabrication.

## Boss-Lock Spool Couplers

- Couplers are supplied standard with a Buna-N gasket, other gasket types are available on pages 65-66.

### coupler x coupler

Size	Aluminum		316 Stainless Steel	
	Part #	Price/E	Part #	Price/E
2"	<b>ADD200</b> <sup>1</sup>	<b>\$174.25</b>	<b>RDD200EZ</b>	<b>\$360.85</b>
2" x 3"	<b>ADD2030</b> <sup>1</sup>	<b>178.50</b>	<b>RDD2030EZ</b> <sup>1</sup>	<b>420.00</b>
3"	<b>ADD300</b> <sup>1</sup>	<b>236.35</b>	<b>RDD300EZ</b> <sup>1</sup>	<b>548.00</b>
3" x 4"	<b>ADD3040</b> <sup>1</sup>	<b>315.95</b>	<b>RDD3040EZ</b> <sup>1</sup>	<b>640.00</b>
4"	<b>ADD400</b> <sup>1</sup>	<b>300.00</b>	<b>RDD400EZ</b> <sup>1</sup>	<b>645.50</b>
6"	---	---	<b>RDD600EZ</b> <sup>1</sup>	<b>1200.00</b>



reducer / increaser



same size

<sup>1</sup> Parts are produced as a welded fabrication.



## Adapters and Couplers x 150# Flanged Drilling

See page 661 for flange drilling standards.

### Dixon adapter x 150# flange



adapter x 150# ASA flange

Size	Aluminum		Flange Thick.	Iron		Flange Thick.	316 Stainless Steel		Flange Thick.
	Part #	Price/E		Part #	Price/E		Part #	Price/E	
1"	---	---	---	---	---	---	<b>100-AL-SS</b>	<b>\$204.00</b>	9/16"
1½"	---	---	---	---	---	---	<b>150-AL-SS</b>	<b>197.70</b>	11/16"
2"	<b>200-AL-AL</b>	<b>\$109.70</b>	3/4"	---	---	---	<b>200-AL-SS</b>	<b>229.70</b>	7/16"
3"	<b>300-AL-AL</b>	<b>112.20</b>	5/8"	<b>300-AL-MI</b>	<b>\$203.70</b>	5/8"	<b>300-AL-SS</b>	<b>299.20</b>	7/16"
4"	<b>400-AL-AL</b>	<b>164.00</b>	5/8"	---	---	---	<b>400-AL-SS</b>	<b>535.00</b>	7/16"
6"	<b>600-AL-AL</b>	<b>259.00</b>	5/8"	---	---	---	<b>600-AL-SS</b>	<b>736.45</b>	5/8"
8"	<b>800-AL-AL</b> <sup>1</sup>	<b>1400.00</b>	1-1/8"	---	---	---	---	---	---

<sup>1</sup> Part is produced as a welded fabrication.

- Couplers are supplied standard with a Buna-N gasket, other gasket types are available on pages 65-66.

### Dixon coupler x 150# flange



coupler x 150# ASA flange

Size	Aluminum		Flange Thickness	316 Stainless Steel		Flange Thickness
	Part #	Price/E		Part #	Price/E	
1"	---	---	---	<b>100-DL-SS</b>	<b>\$196.10</b>	21/32"
1½"	---	---	---	<b>150-DL-SS</b>	<b>260.80</b>	25/32"
2"	<b>200-DL-AL</b>	<b>\$152.70</b>	3/4"	<b>200-DL-SS</b>	<b>385.00</b>	7/16"
3"	<b>300-DL-AL</b>	<b>219.45</b>	15/16"	<b>300-DL-SS</b>	<b>499.00</b>	7/16"
4"	<b>400-DL-AL</b>	<b>306.20</b>	15/16"	<b>400-DL-SS</b>	<b>1090.00</b>	7/16"
6"	<b>600-DL-AL</b>	<b>407.00</b>	1"	<b>600-DL-SS</b>	<b>1124.00</b>	5/8"
8"	<b>800-DL-AL</b> <sup>1</sup>	<b>1800.00</b>	1-1/8"	---	---	---

<sup>1</sup> Part is produced as a welded fabrication.

- Couplers are supplied standard with a Buna-N gasket, other gasket types are available on pages 65-66.

### EZ Boss-Lock coupler x 150# flange



EZ Boss-Lock coupler x 150# ASA flange

Size	316 Stainless Steel		Flange Thickness
	Part #	Price/E	
1"	<b>RDL100EZ</b> <sup>1</sup>	<b>\$390.00</b>	9/16"
1½"	<b>RDL150EZ</b> <sup>1</sup>	<b>595.00</b>	11/16"
2"	<b>RDL200EZ</b>	<b>425.00</b>	7/16"
3"	<b>RDL300EZ</b> <sup>1</sup>	<b>575.00</b>	7/16"
4"	<b>RDL400EZ</b> <sup>1</sup>	<b>695.00</b>	7/16"
6"	<b>RDL600EZ</b> <sup>1</sup>	<b>1683.00</b>	1"

<sup>1</sup> Parts are produced as a welded fabrication.

## In-Line Sight Glass for Bulk Transfer

- Designed for dry bulk transfer hose. Includes aluminum bodies, Buna seals, acrylic sight glasses, stainless steel hardware and bronze cam arms (where applicable).
- Not intended for liquid service, for dry bulk transfer *only*. **SAFETY ALERT**



### coupler x adapter

Size	Part #	Price/E
4" x 4"	<b>3544CA</b>	<b>\$310.70</b>
3" x 3"	<b>3533CA</b>	<b>310.70</b>
4" x 3"	<b>3543CA</b>	<b>310.70</b>
3" x 4"	<b>3534CA</b>	<b>310.70</b>

### adapter x adapter

Size	Part #	Price/E
3" x 3"	<b>3533AA</b>	<b>\$230.75</b>
4" x 4"	<b>3544AA</b>	<b>230.75</b>
3" x 4"	<b>3534AA</b>	<b>230.75</b>

### coupler x coupler

Size	Part #	Price/E
4" x 4"	<b>3544CC</b>	<b>\$387.15</b>
3" x 3"	<b>3533CC</b>	<b>387.15</b>
4" x 3"	<b>3543CC</b>	<b>387.15</b>

## Specialty Items

### coupler x adapter wye

Size	Aluminum		Price/E <sup>1</sup>
	Part #		
2"	<b>200YDAAAL</b>		<b>\$142.00</b>



### tank truck flanged tee

Size	Aluminum		Price/E <sup>1</sup>
	Part #		
4"	<b>400-TLT-AL</b>		<b>\$255.00</b>



<sup>1</sup> Price subject to availability. Minimum production quantities may be required. Some parts have a colored anodized surface finish.

## TTMA Series Flange Adapters

- provides a simple and easy way to quickly convert threaded components to a standard TTMA flange configuration
- more durable than welded fabrications due to the solid cast lightweight aluminum design
- design improves flow through adapter even on the 3" reducer
- compact size reduces the overall space needed to install
- for flange drilling standards, see page 661

### Male Threaded

#### TTMA flange x standard male NPT

TTMA Flange	Male NPT	Aluminum	
		Part #	Price/E
3"	3"	<b>TTF3AL-3MT</b>	<b>\$82.45</b>
4"	3"	<b>TTF4AL-3MT</b>	<b>62.05</b>
4"	4"	<b>TTF4AL-4MT</b>	<b>57.55</b>



TTMA flange x male NPT

### Extended Length - Male Threaded

#### TTMA flange x extended length male NPT

TTMA Flange	Male NPT	Aluminum	
		Part #	Price/E
4"	3"	<b>TTF4AL-3EMT</b>	<b>\$82.45</b>
4"	4"	<b>TTF4AL-4EMT</b>	<b>96.25</b>



TTMA flange x male NPT extended length

### Female Threaded

#### TTMA flange x female NPT

TTMA Flange	Female NPT	Aluminum	
		Part #	Price/E
4"	3"	<b>TTF4AL-3FT</b>	<b>\$73.80</b>
4"	4"	<b>TTF4AL-4FT</b>	<b>73.55</b>



TTMA flange x female NPT

### Slip-on

#### TTMA flange x socket weld

TTMA Flange	Pipe Size	Aluminum	
		Part #	Price/E
4"	4"	<b>TTF400SP</b>	<b>\$67.00</b>



TTMA flange x socket weld

## TTMA Flange Extensions

Flange extensions are used on load arms to connect the API load coupler to the load arm.

- adds a 6" space between the load arm and the tank truck
- Flange extension with groove provides a specified parting point to prevent excessive damage to the loading arm.



TETF4AL



TETFG4AL

Size	Description	Aluminum	
		Part #	Price/E
4"	TTMA flange extension	<b>TETF4AL</b>	<b>\$127.00</b>
4"	TTMA flange extension with groove	<b>TETFG4AL</b>	<b>132.00</b>

## Dixon Adapters and Couplers x Round Tank Truck Flange

- Pressure rating is based on the seal of the mating part. See ratings on page 16.
  - See page 661 for flange drilling standards.
  - aluminum flanges have a flat face, stainless flanges have a raised face
- adapter x round tank truck flange**



adapter x round tank truck flange

Size	Aluminum		316 Stainless Steel	
	Part #	Price/E	Part #	Price/E
3"	<b>300-ALT-AL</b>	<b>\$74.20</b>	<b>300-ALT-SS<sup>1</sup></b>	<b>\$472.50</b>
3" x 4"	<b>3040ALTAL</b>	<b>106.50</b>	---	---
4"	<b>400-ALT-AL</b>	<b>84.70</b>	<b>400-ALT-SS<sup>1</sup></b>	<b>750.00</b>
6"	<b>600-ALT-AL</b>	<b>231.60</b>	---	---

<sup>1</sup> Parts are produced as a welded fabrication.

- Couplers are supplied standard with a Buna-N gasket, other gasket types are available on pages 65-66.
- coupler x round tank truck flange**



coupler x round tank truck flange

Size	Aluminum		
	Part #	Price/E	
3"	<b>300-DLT-AL</b>	<b>\$137.80</b>	
3" x 4"	<b>3040DLTAL</b>	<b>154.00</b>	
4"	<b>400-DLT-AL</b>	<b>156.90</b>	
6"	<b>600-DLT-AL</b>	<b>332.80</b>	

## Dixon 22½° Adapters and Couplers x Round Tank Truck Flange

- Pressure rating is based on the seal of the mating part. See ratings on page 16.
- 22½° adapter x round tank truck flange**



22½° adapter x round flange

Size	Aluminum	
	Part #	Price/E
4"	<b>40022ALTAL</b>	<b>\$186.30</b>

- Couplers are supplied standard with a Buna-N gasket, other gasket types are available on pages 65-66.
- 22½° coupler x round tank truck flange**



22½° coupler x round flange

Size	Aluminum	
	Part #	Price/E
4"	<b>40022DLTAL</b>	<b>\$153.60</b>

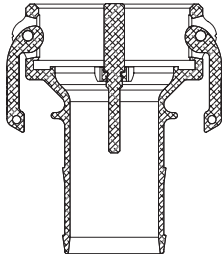
## Round Tank Truck Flange Gaskets (TTMA)



Size	OD	ID	THK	Material	Part #	Price/E
3"	5-5/8"	3-1/2"	1/8"	Cork / Buna	<b>300GTTFCB</b>	<b>\$3.40</b>
3"	5-5/8"	3-1/2"	1/16"	Teflon® envelope with Klingersil® filler	<b>300GTTFTK</b>	<b>15.10</b>
3"	5-5/8"	3-1/2"	1/8"	Klingersil® C-4401	<b>300GTTFFK</b>	<b>9.35</b>
3"	5-7/8"	3-1/2"	1/4"	Teflon® with fiber core	<b>40321TF</b>	<b>21.30</b>
4"	6-5/8"	4-9/16"	1/8"	Cork / Buna	<b>400GTTFCB</b>	<b>4.40</b>
4"	6-5/8"	4-9/16"	1/16"	Teflon® envelope with Klingersil® filler	<b>400GTTFTK</b>	<b>20.75</b>
4"	6-5/8"	4-9/16"	1/8"	Klingersil® C-4401	<b>400GTTFFK</b>	<b>17.80</b>
4"	6-7/8"	4-9/16"	1/4"	Teflon® with fiber core	<b>40322TF</b>	<b>25.60</b>

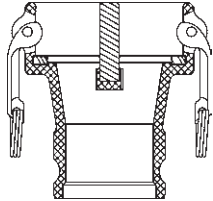
## Dixon Vapor Recovery Couplers

- Not intended for liquid service, for vapor recovery *only*. **SAFETY ALERT**
- cast aluminum body
- bronze arms with stainless steel pins
- plated carbon steel finger rings
- Buna-N gasket



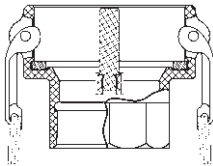
### coupler with probe x hose shank

Coupler Size	Hose Shank Size	Aluminum	
		Part #	Price/E
4"	3"	<b>4030-CVR-AL</b>	<b>\$129.10</b>
4"	4"	<b>400-CVR-AL</b>	<b>137.00</b>



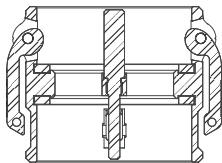
### coupler with probe x adapter

Coupler Size	Adapter Size	Aluminum	
		Part #	Price/E
4"	3"	<b>4030-DAVR-AL</b>	<b>\$138.90</b>



### coupler with probe x female NPT

Coupler Size	Female NPT Size	Aluminum	
		Part #	Price/E
4"	3"	<b>4030-DVR-AL</b>	<b>\$144.00</b>
4"	4"	<b>400-DVR-AL</b>	<b>147.00</b>



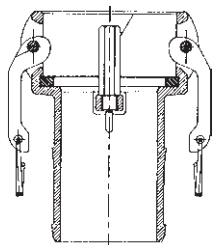
### coupler with probe x coupler with probe

Coupler Size	Coupler Size	Aluminum	
		Part #	Price/E
4"	4"	<b>400-DDVR-AL</b>	<b>\$157.10</b>



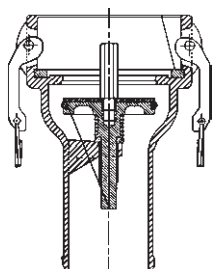
## Dixon Bayco Vapor Recovery Couplers

- Not intended for liquid service, for vapor recovery *only*. **SAFETY ALERT**
- *The Dixon replacement handle assemblies will not work on these fittings.*
- for use with 3" vapor hose
- cast aluminum body, bronze arms with stainless steel pins and finger rings
- Buna-N gasket



### coupler with probe x hose shank

Coupler Size	Hose Shank Size	Aluminum	
		Part #	Price/E
3"	3"	<b>VRC3000AL</b>	<b>\$135.75</b>



- The VR4030CS-AL has a Viton® O-ring poppet seal.

### coupler with poppet and probe x hose shank

Coupler Size	Hose Shank Size	Aluminum	
		Part #	Price/E
4"	3"	<b>VR4030CS-AL<sup>1</sup></b>	<b>\$200.95</b>

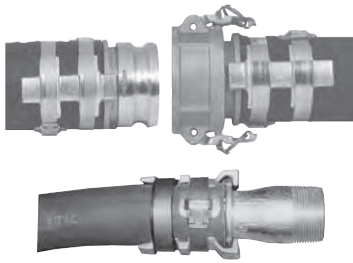


<sup>1</sup> The VR4030CS-AL will interchange with all competitor vapor valves *except* Civacon #633LVH (special bulb design).

**SAFETY ALERT**



## Strap-Grip Saddles and Fittings



- Strap-Grip is designed to provide greater resistance to end pull than conventional band clamps alone.
- Only the fittings shown below are designed for use with Strap-Grip Saddles.
- Saddles are sold in pairs and designed for use with 3/4" or 5/8" wide bands.
- Bands must be purchased separately.
- Band clamps should first be applied to the OD to seal the hose. Then Strap-Grip saddles should be banded over the initial clamp to anchor the fitting in the hose.

### saddles only



saddles

Size	Hose OD		Plated Iron	
	from	to	Part #	Price/E <sup>1</sup>
1½"	1-13/16"	2-1/8"	<b>SGS150</b>	<b>\$14.00</b>
2"	2-5/8"	3"	<b>SGS200</b>	<b>16.50</b>
3"	3-1/2"	3-7/8"	<b>SGS300</b>	<b>21.00</b>
4"	4-9/16"	5-1/8"	<b>SGS400</b>	<b>23.70</b>
6"	6-1/2"	7-1/16"	<b>SGS600</b>	<b>42.00</b>
8" <sup>2</sup>	8-5/8"	9-3/8"	<b>SGS800</b>	<b>45.00</b>

<sup>1</sup> prices are for two saddles

<sup>2</sup> item will be discontinued as inventory is depleted

### male NPT x hose shank



male NPT x hose shank

Size	Schedule 40 Plated Carbon Steel		Schedule 40 Stainless Steel		Schedule 80 <sup>1</sup> Plated Carbon Steel	
	Part #	Price/E	Part #	Price/E	Part #	Price/E
1½"	<b>LP21</b>	<b>\$60.00</b>	---	---	<b>LP21-80</b>	<b>\$69.00</b>
2"	<b>LP26</b>	<b>53.20</b>	---	---	<b>LP26-80</b>	<b>71.85</b>
3"	<b>LP36</b>	<b>125.00</b>	<b>RLP36</b> <sup>2</sup>	<b>\$221.40</b>	---	---
4"	<b>LP46</b>	<b>164.00</b>	<b>RLP46</b> <sup>2</sup>	<b>375.00</b>	---	---
6"	<b>LP66</b>	<b>340.00</b>	---	---	---	---

<sup>1</sup> Schedule 80 stems meet NFPA 58

<sup>2</sup> tubular steel

### Boss-Lock type C coupler x hose shank



female coupler x hose shank

Size	316 Stainless	
	Part #	Price/E
1"	<b>RC100CEZ</b>	<b>\$120.20</b>
1½"	<b>RC150CEZ</b>	<b>148.20</b>
2" <sup>1</sup>	<b>RC200CEZ</b>	<b>152.25</b>
3" <sup>1</sup>	<b>RC300CEZ</b>	<b>251.00</b>

<sup>1</sup> items will be discontinued as inventory is depleted

### type E adapter x hose shank



male adapter x hose shank

Size	316 Stainless	
	Part #	Price/E
2"	<b>RE200C</b>	<b>\$96.00</b>
3"	<b>RE300C</b>	<b>190.00</b>



## Dixon Butt Weld to Tube Cam and Groove

- 316 stainless steel investment casting
- designed to be butt welded to standard sanitary tubing

### adapter x butt weld to tube end

Size	316 Stainless Steel	
	Part #	Price/E
1"	<b>RE100BT</b>	<b>\$130.00</b>
1½"	<b>RE150BT</b>	<b>143.00</b>
2"	<b>RE200BT</b>	<b>158.00</b>
3"	<b>RE300BT</b>	<b>357.00</b>



### Boss-Lock coupler x butt weld to tube end

Size	316 Stainless Steel	
	Part #	Price/E
1"	<b>RC100BT</b>	<b>\$210.00</b>
1½"	<b>RC150BT</b>	<b>243.00</b>
2"	<b>RC200BT</b>	<b>280.00</b>
3"	<b>RC300BT</b>	<b>441.00</b>



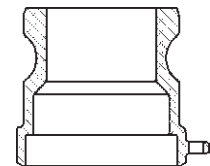
## Dixon Adapters for Welding

- not all configurations are stocked
- Line drawings are for reference only. Consult the factory for specific dimensions.
- Final weld preparation, as with all weld fittings, is the responsibility of the welder.

**SAFETY**  
ALERT

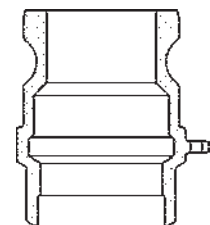
### socket weld to schedule 40 pipe

Size	Bore	Aluminum		316 Stainless Steel	
		Part #	Price/E	Part #	Price/E
¾"	1.065	---	---	<b>75AWSPSS</b>	<b>\$104.20</b>
1"	1.330	---	---	<b>100AWSPSS</b>	<b>97.95</b>
1½"	1.915	<b>150AWSPAL</b>	<b>\$60.00</b>	<b>150AWSPSS</b>	<b>117.00</b>
2"	2.390	<b>200AWSPAL</b>	<b>46.35</b>	<b>200AWSPSS</b>	<b>110.00</b>
3"	3.530	<b>300AWSPAL</b>	<b>58.60</b>	<b>300AWSPSS</b>	<b>196.35</b>
4"	4.530	<b>400AWSPAL</b>	<b>80.85</b>	<b>400AWSPSS</b>	<b>294.00</b>
5"	5.593	<b>500AWSPAL</b>	<b>123.75</b>	<b>500AWSPSS</b>	<b>450.00</b>
6"	6.655	<b>600AWSPAL</b>	<b>135.00</b>	<b>600AWSPSS</b>	<b>474.50</b>
8" DIX	8.711	<b>800AWSPAL</b> <sup>1</sup>	<b>474.00</b>	---	---
8" BL	8.711	<b>801AWSPAL</b> <sup>1</sup>	<b>453.00</b>	---	---



### butt weld to schedule 40 pipe / socket weld to nominal OD tubing

Size	Bore	Aluminum		316 Stainless Steel	
		Part #	Price/E	Part #	Price/E
¾"	.765	---	---	<b>75AWBPSTSS</b>	<b>\$104.20</b>
1"	1.015	---	---	<b>100AWBPSTSS</b>	<b>97.95</b>
1½"	1.515	<b>150AWBPSTAL</b>	<b>\$52.60</b>	<b>150AWBPSTSS</b>	<b>117.00</b>
2"	2.015	<b>200AWBPSTAL</b>	<b>39.15</b>	<b>200AWBPSTSS</b>	<b>110.00</b>
3"	3.015	<b>300AWBPSTAL</b>	<b>57.70</b>	<b>300AWBPSTSS</b>	<b>196.35</b>
4"	4.015	<b>400AWBPSTAL</b>	<b>80.00</b>	<b>400AWBPSTSS</b>	<b>294.00</b>
5"	5.015	<b>500AWBPSTAL</b>	<b>122.50</b>	<b>500AWBPSTSS</b>	<b>450.00</b>
6"	6.020	<b>600AWBPSTAL</b>	<b>139.10</b>	<b>600AWBPSTSS</b>	<b>474.00</b>
8" BL	8.035	<b>801AWBPSTAL</b> <sup>1</sup>	<b>440.00</b>	---	---



<sup>1</sup> Dixon and Boss-Lock cam and groove couplings do not interchange in the 8" size.

**SAFETY**  
ALERT

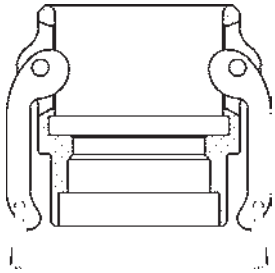


## Dixon Couplers for Welding

- not all configurations are stocked
- Boss-Lock versions are also available. Consult the factory for pricing and availability.
- Line drawings are for reference only. Consult the factory for specific dimensions.
- Final weld preparation, as with all weld fittings, is the responsibility of the welder.

**SAFETY**  
ALERT

### socket weld to schedule 40 pipe

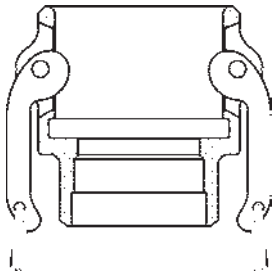


Size	Bore	Aluminum		316 Stainless Steel	
		Part #	Price/E	Part #	Price/E
¾"	1.065	---	---	<b>75DWSPSS</b>	<b>\$148.75</b>
1"	1.330	<b>100DWSPAL</b>	<b>\$0</b>	<b>100DWSPSS</b>	<b>126.20</b>
1½"	1.915	<b>150DWSPAL</b>	<b>61.80</b>	<b>150DWSPSS</b>	<b>153.00</b>
2"	2.390	<b>200DWSPAL</b>	<b>74.25</b>	<b>200DWSPSS</b>	<b>162.25</b>
3"	3.530	<b>300DWSPAL</b>	<b>75.10</b>	<b>300DWSPSS</b>	<b>268.80</b>
4"	4.530	<b>400DWSPAL</b>	<b>95.50</b>	<b>400DWSPSS</b>	<b>351.00</b>
5"	5.593	<b>500DWSPAL</b>	<b>219.40</b>	<b>500DWSPSS</b>	<b>691.00</b>
6"	6.655	<b>600DWSPAL</b>	<b>236.90</b>	<b>600DWSPSS</b>	<b>772.50</b>
8"	8.711	<b>800DWSPAL</b> <sup>1</sup>	<b>990.00</b>	---	---

<sup>1</sup> Dixon and Boss-Lock cam and groove couplings *do not interchange in the 8" size*. The 8" Dixon design has 4 cam arms.

**SAFETY**  
ALERT

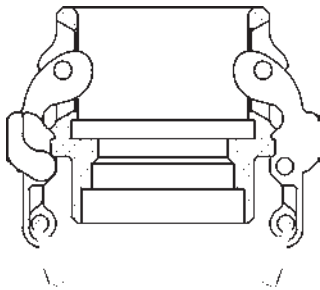
### butt weld to schedule 40 pipe / socket weld to nominal OD tubing



Size	Bore	Aluminum		316 Stainless Steel	
		Part #	Price/E	Part #	Price/E
¾"	.765	---	---	<b>75DWBPSTSS</b>	<b>\$125.90</b>
1"	1.015	---	---	<b>100DWBPSTSS</b>	<b>126.20</b>
1½"	1.515	<b>150DWBPSTAL</b>	<b>\$61.80</b>	<b>150DWBPSTSS</b>	<b>153.00</b>
2"	2.015	<b>200DWBPSTAL</b>	<b>57.70</b>	<b>200DWBPSTSS</b>	<b>162.25</b>
3"	3.015	<b>300DWBPSTAL</b>	<b>69.80</b>	<b>300DWBPSTSS</b>	<b>268.80</b>
4"	4.015	<b>400DWBPSTAL</b>	<b>93.90</b>	<b>400DWBPSTSS</b>	<b>367.10</b>
5"	5.015	<b>500DWBPSTAL</b>	<b>172.00</b>	---	---
6"	6.020	<b>600DWBPSTAL</b>	<b>236.90</b>	---	---

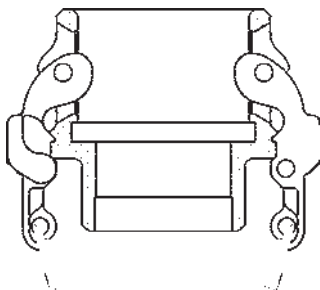
## EZ Boss-Lock Couplers for Welding

### socket weld to schedule 40 pipe



Size	Bore	316 Stainless Steel	
		Part #	Price/E
¾"	1.065	<b>RDWSP075EZ</b>	<b>\$214.25</b>
1"	1.330	<b>RDWSP100EZ</b>	<b>199.80</b>
1½"	1.915	<b>RDWSP150EZ</b>	<b>208.00</b>
2"	2.390	<b>RDWSP200EZ</b>	<b>215.30</b>
3"	3.530	<b>RDWSP300EZ</b>	<b>299.00</b>
4"	4.530	<b>RDWSP400EZ</b>	<b>356.00</b>
6"	6.655	<b>RDWSP600EZ</b>	<b>695.75</b>

### butt weld to schedule 40 pipe / socket weld to nominal OD tubing



Size	Bore	316 Stainless Steel	
		Part #	Price/E
¾"	.765	<b>RDWBPST075EZ</b>	<b>\$153.40</b>
1"	1.015	<b>RDWBPST100EZ</b>	<b>159.65</b>
1½"	1.515	<b>RDWBPST150EZ</b>	<b>221.45</b>
2"	2.015	<b>RDWBPST200EZ</b>	<b>227.00</b>
3"	3.015	<b>RDWBPST300EZ</b>	<b>307.00</b>
4"	4.015	<b>RDWBPST400EZ</b>	<b>380.00</b>
6"	6.020	<b>RDWBPST600EZ</b>	<b>554.00</b>

## Hastelloy Adapters

- fittings are Hastelloy type CW-6M-C276
- couplers supplied with Viton® gaskets
- cam arms are 316 stainless steel
- pins are 302 stainless steel
- rings are yellow zinc plated 12 gauge steel wire



male adapter  
x female NPT

### Type A

Size	Part #	Price/E
1"	<b>100-A-HA</b>	<b>\$290.00</b>
1½"	<b>150-A-HA</b>	<b>351.50</b>
2"	<b>200-A-HA</b>	<b>396.55</b>



male adapter  
x male NPT

### Type F

Size	Part #	Price/E
1"	<b>100-F-HA</b>	<b>\$235.00</b>
1½"	<b>150-F-HA</b>	<b>505.00</b>
2"	<b>200-F-HA</b>	<b>610.00</b>



male adapter  
x hose shank

### Type E

Size	Part #	Price/E
1"	<b>100-E-HA</b>	<b>\$271.90</b>
1½"	<b>150-E-HA</b>	<b>345.00</b>
2"	<b>200-E-HA</b>	<b>424.00</b>

## Hastelloy Couplers



female coupler  
x hose shank

### Type C

Size	Part #	Price/E
1"	<b>HAC100EZ</b>	<b>\$460.00</b>
1½"	<b>HAC150EZ</b>	<b>540.00</b>
2"	<b>HAC200EZ</b>	<b>611.00</b>



female coupler  
x female NPT

### Type D

Size	Part #	Price/E
1"	<b>HAD100EZ</b>	<b>\$492.00</b>
1½"	<b>HAD150EZ</b>	<b>615.00</b>
2"	<b>HAD200EZ</b>	<b>632.60</b>



female coupler  
x male NPT

### Type B

Size	Part #	Price/E
1"	<b>HAB100EZ</b>	<b>\$420.40</b>
1½"	<b>HAB150EZ</b>	<b>525.40</b>
2"	<b>HAB200EZ</b>	<b>568.30</b>

## Dixon Standard Handle Assemblies

- Stainless steel pins are standard with all assemblies.
- roll pins are 302 stainless and solid pins are 303 stainless
- Pull rings are standard on sizes 1 1/4" thru 6". Pull rings are optional on other sizes.



Coupler Size	Description	Brass		316 Sintered Stainless Steel		316 Investment Stainless Steel	
		Part #	Price/E	Part #	Price/E	Part #	Price/E
1/2"	cam arm and pin	---	---	<b>50-HP-SP</b>	<b>\$3.90</b>	---	---
3/4"	cam arm and pin	---	---	<b>75-HP-SP</b>	<b>3.95</b>	---	---
1"	cam arm and pin	---	---	<b>100-HP-SP</b>	<b>4.90</b>	---	---
1 1/4" - 2 1/2"	cam arm, ring and pin	<b>200-HRP-BR</b>	<b>\$8.20</b>	<b>200-HRP-SP</b>	<b>6.40</b>	---	---
2"	cam arm, ring and pin	---	---	---	---	<b>200-HSCRPSI</b>	<b>\$11.00</b>
3"	cam arm, ring and pin	---	---	---	---	<b>300-HSCRPSI</b>	<b>15.00</b>
3" - 5"	cam arm, ring and pin	<b>300-HRP-BR</b>	<b>9.15</b>	<b>300-HRP-SP</b>	<b>7.55</b>	---	---
6"	cam arm, ring and pin	<b>600-HRP-BR</b>	<b>37.35</b>	---	---	<b>600-HRP-SI</b>	<b>55.75</b>
8"	cam arm and pin for new coupler design	<b>800-HNP-BR</b>	<b>69.50</b>	---	---	---	---

## Locking Handle for Dixon Dust Caps



- not supplied with pins

Coupler Size	Hole Diameter	Brass	
		Part #	Price/E
2"	9/32"	<b>200-LH-BR</b>	<b>\$18.75</b>
3"	5/16"	<b>300-LH-BR</b>	<b>21.00</b>
4"	3/8"	<b>400-LH-BR</b>	<b>24.70</b>

## Paddle Handle for Dixon Couplings

- not supplied with pins



Coupler Size	Brass	
	Part #	Price/E
3" and 4"	<b>300H-PADBR</b>	<b>\$31.35</b>



Coupler Size	316 Investment Cast Stainless Steel	
	Part #	Price/E
3" and 4"	<b>300H-PADSS</b>	<b>\$29.75</b>

## Boss-Lock Standard Handle Assemblies

assembly includes cam arm, pin and pull ring safety clip



Coupler Size	Brass		316 Investment Cast Stainless Steel		Plated Iron	
	Part #	Price/E	Part #	Price/E	Part #	Price/E
3/4" - 1"	<b>BHSC175</b>	<b>\$12.50</b>	<b>RHSC175</b>	<b>\$15.95</b>	---	---
1 1/4" - 2 1/2"	<b>BHSC152</b>	<b>12.25</b>	<b>RHSC152</b>	<b>19.40</b>	<b>IHSC152</b>	<b>\$10.00</b>
3" and 4"	<b>BHSC34</b>	<b>14.90</b>	<b>RHSC34</b>	<b>29.00</b>	<b>IHSC34</b>	<b>10.25</b>

assembly includes cam arm, pin and pull ring



Coupler Size	Brass		Plated Iron	
	Part #	Price/E	Part #	Price/E
6" and 8"	<b>BH6</b>	<b>\$42.60</b>	<b>IH6</b>	<b>\$33.40</b>



## EZ Boss-Lock Handles

- investment cast stainless steel cam arm and lever
- 316 stainless steel spring
- stainless steel pin, washer, plated carbon steel pull ring

Coupler Size	316 Stainless Steel	
	Part #	Price/E
3/4" - 1"	<b>RHEZ175</b>	<b>\$21.40</b>
1 1/4" - 2 1/2"	<b>RHEZ152</b>	<b>24.70</b>
3" and 4"	<b>RHEZ34</b>	<b>38.50</b>
6" and 8"	<b>RHEZ6</b>	<b>62.40</b>



**SAFETY** Under no circumstances should the EZ Boss-Lock cam arms be used on any fitting not specifically produced for their use.  
**ALERT** The aluminum, brass and iron are made from sand castings. To ensure proper functioning of the EZ Boss-Lock cam arm assemblies, we sort the castings to ensure there is sufficient length and orientation on the lugs on the main casting to engage the lever. We also buff or grind the rougher sand cast surface to ensure that the lever will move freely. *The EZ Boss-Lock cam arms cannot be retrofitted onto existing aluminum, brass or plated iron Boss-Lock already in service.*

## Bayco Replacement Handle Assemblies

for Bayco couplers only

- brass cam arm
- carbon steel ring
- stainless steel pin

Coupler Size	Part #	Price/E
1 1/4" - 2 1/2"	<b>CARP12BZ</b>	<b>\$10.20</b>
3" - 5"	<b>CARP34BZ</b>	<b>12.15</b>
6"	<b>CARP60BZ</b>	<b>49.00</b>
8"	<b>CARP80BZ</b>	<b>93.00</b>



## Pull Ring Safety Clips for Boss-Lock Couplings

Coupler Size	Carbon Steel		316 Stainless Steel	
	Part #	Price/E	Part #	Price/E
3/4" - 1"	---	---	<b>100PRSCSS</b>	<b>\$2.50</b>
1 1/4" - 2 1/2"	<b>200PRSCCS</b>	<b>\$1.75</b>	<b>200PRSCSS</b>	<b>2.50</b>
3" and 4"	<b>300PRSCCS</b>	<b>1.85</b>	<b>300PRSCSS</b>	<b>2.75</b>



## Stainless Steel Pull Ring

304 Stainless Steel	
Part #	Price/E
<b>R200SS</b>	<b>\$1.50</b>



## Clips and Lanyards for Boss-Lock Couplings

- carbon steel clip
- nylon lanyard

Coupler Size	Part #	Price/E
3/4" - 1"	<b>ACL4</b>	<b>\$2.90</b>
1 1/4" - 4"	<b>ACL2</b>	<b>2.80</b>



- carbon steel clip
- no lanyard supplied with this clip

Coupler Size	Part #	Price/E
6"	<b>ACL3</b>	<b>\$6.00</b>



**Carbon Steel Clip Assembly**

- for use with Boss-Lock couplings
- includes a pull ring, chain and AC3 clip

Part #	Price/E
<b>BLCA152CS</b>	<b>\$8.00</b>

**Clip for Boss-Lock Couplings**

- .072 stainless steel wire

Stainless Steel Part #	Price/E
<b>AC7</b>	<b>\$2.10</b>

**Lanyard for Boss-Lock Couplings**

- breaking strength: 160 lbs.
- overall length: 7" eye to eye

304 Stainless Part #	Price/E
<b>LR7</b>	<b>\$7.75</b>

**Jack Chains with S-Hooks**

Length	Material	Part #	Price/E	Opt Qty
6"	brass	<b>CH-B-6</b>	<b>\$6.90</b>	10
12"	brass	<b>CH-B-12</b>	<b>8.10</b>	10
24"	brass	<b>CH-B-24</b>	<b>18.90</b>	--
12"	carbon steel	<b>CH-C-12</b>	<b>7.50</b>	10
6"	stainless	<b>CH-SS-6</b>	<b>7.60</b>	10
12"	stainless	<b>CH-SS-12</b>	<b>11.55</b>	10
24"	stainless	<b>CH-SS-24</b>	<b>18.60</b>	10

**Sash Chains with Pull Rings**

- brass chain, plated steel pull ring

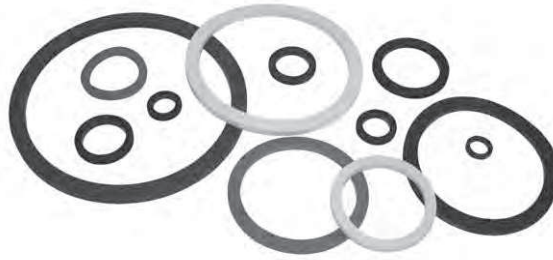
Length	Part #	Price/E
4½"	<b>J125</b>	<b>\$6.50</b>
6½"	<b>J150</b>	<b>8.60</b>
8½"	<b>J300</b>	<b>11.60</b>
12¾"	<b>J500</b>	<b>16.90</b>

**PVC Coated Lanyards**

- PVC coated carbon steel with aluminum crimp sleeves
- one end factory crimped, one end uncrimped for field installation

Length	Part #	Price/E
15"	<b>CAL15</b>	<b>\$7.00</b>
25"	<b>CAL25</b>	<b>8.45</b>

## Cam and Groove Gaskets



- White neoprene and white Buna-N gaskets all contain FDA approved materials.

Size	Buna-N		Viton®-A		extra thick Buna-N		Ethylene Propylene	
	Part #	Price	Part #	Price	Part #	Price	Part #	Price
1/2"	<b>50-G-BU</b>	\$1.10	<b>50-G-VI</b>	\$4.90	---	--	---	--
3/4"	<b>75-G-BU</b>	1.10	<b>75-G-VI</b>	5.80	---	--	<b>75-G-EPR</b>	\$1.90
1"	<b>100-G-BU</b>	1.10	<b>100-G-VI</b>	8.50	<b>100GTHK</b>	\$1.50	<b>100-G-EPR</b>	1.95
1 1/4"	<b>125-G-BU</b>	1.10	<b>125-G-VI</b>	12.10	<b>125GTHK</b>	2.00	<b>125-G-EPR</b>	2.10
1 1/2"	<b>150-G-BU</b>	1.25	<b>150-G-VI</b>	11.95	<b>150GTHK</b>	2.00	<b>150-G-EPR</b>	2.05
2"	<b>200-G-BU</b>	1.15	<b>200-G-VI</b>	16.90	<b>200GTHK</b>	2.00	<b>200-G-EPR</b>	2.20
2 1/2"	<b>250-G-BU</b>	1.30	<b>250-G-VI</b>	20.90	<b>250GTHK</b>	2.55	<b>250-G-EPR</b>	2.45
3"	<b>300-G-BU</b>	1.35	<b>300-G-VI</b>	20.80	<b>300GTHK</b>	2.45	<b>300-G-EPR</b>	2.50
4"	<b>400-G-BU</b>	1.85	<b>400-G-VI</b>	34.80	<b>400GTHK</b>	3.10	<b>400-G-EPR</b>	3.40
5"	<b>500-G-BU</b>	3.40	<b>500-G-VI</b>	76.40	---	--	---	--
6"	<b>600-G-BU</b>	4.95	<b>600-G-VI</b>	69.40	---	--	---	--
8"	<b>800-G-BU</b>	21.40	<b>800-G-VI</b>	119.00	---	--	---	--

Size	Neoprene		white Neoprene		white Buna-N		Silicone	
	Part #	Price	Part #	Price	Part #	Price	Part #	Price
1/2"	---	--	---	--	---	--	---	--
3/4"	<b>75-G-NE</b>	\$1.90	---	--	---	--	---	--
1"	<b>100-G-NE</b>	2.00	---	--	---	--	---	--
1 1/4"	<b>125-G-NE</b>	2.15	---	--	---	--	---	--
1 1/2"	<b>150-G-NE</b>	2.10	<b>150-G-WNE</b>	\$4.50	---	--	<b>150-G-SIL</b>	\$3.55
2"	<b>200-G-NE</b>	2.30	<b>200-G-WNE</b>	6.40	---	--	<b>200-G-SIL</b>	3.80
2 1/2"	<b>250-G-NE</b>	3.15	---	--	---	--	---	--
3"	<b>300-G-NE</b>	3.70	<b>300-G-WNE</b>	9.00	<b>300-G-WB</b>	\$8.95	<b>300-G-SIL</b>	8.35
4"	<b>400-G-NE</b>	4.50	<b>400-G-WNE</b>	9.35	<b>400-G-WB</b>	9.20	<b>400-G-SIL</b>	9.55
5"	---	--	<b>500-G-WNE</b>	18.80	---	--	---	--
6"	---	--	<b>600-G-WNE</b>	14.00	---	--	---	--
8"	---	--	---	--	---	--	---	--

## Cam and Groove Fuel Gaskets

Size	Part #	Material	Price
1 1/2"	<b>150-G-BF</b>	Buna	\$1.90
2"	<b>200-G-BF</b>	Buna	2.20
3"	<b>300-G-BF</b>	Buna	2.55
4"	<b>400-G-BF</b>	Buna	3.50
4"	<b>400GTHKBF</b>	extra thick Buna-N	6.10

**new**



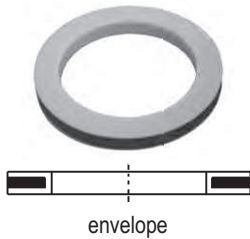
## Teflon® Cam and Groove Gaskets

The torque (force) required to close the handles on a pair of cam and groove fittings will vary according to the gasket chosen. Due to the nature of the Teflon® material, the various Teflon® gasket designs will require the most torque, increasing as you go from envelope to encapsulated, and finally, accordion.

- Teflon® white Buna filler (TFWB) and Teflon® encapsulated silicone (TES) all contain FDA approved materials.
- Teflon® accordion gaskets (TFACC) are recommended for use with viscous (thick) fluids only.
- Encapsulated gasket pressure ratings are reduced to **125 PSI** for ¾" - 4" at ambient temperature (**70°F**)
- Teflon® encapsulated Viton® (TEV) gaskets - maximum operating temperature **200°F**
- Teflon® encapsulated silicone gaskets (TES) gaskets - maximum operating temperature **225°F**
- Maximum operating temperatures for specific chemicals may be lower. Contact Dixon for specific recommendations.

**SAFETY**  
ALERT

### Envelope



Size	Teflon® with Buna filler		Teflon® with Viton® filler		Teflon® with white Buna filler		Teflon® with Ethylene Propylene filler	
	Part #	Price	Part #	Price	Part #	Price	Part #	Price
½"	<b>50-G-TF</b>	<b>\$7.70</b>	<b>50-G-TF-VI</b>	<b>\$10.30</b>	---	--	---	--
¾"	<b>75-G-TF</b>	<b>7.80</b>	<b>75-G-TF-VI</b>	<b>17.75</b>	---	--	---	--
1"	<b>100-G-TF</b>	<b>9.40</b>	<b>100GTFVI</b>	<b>20.00</b>	---	--	---	--
1¼"	<b>125-G-TF</b>	<b>10.30</b>	<b>125GTFVI</b>	<b>29.20</b>	---	--	---	--
1½"	<b>150-G-TF</b>	<b>12.30</b>	<b>150GTFVI</b>	<b>24.00</b>	---	--	<b>150GTFEP</b>	<b>\$15.50</b>
2"	<b>200-G-TF</b>	<b>14.50</b>	<b>200GTFVI</b>	<b>29.60</b>	<b>200GTFWB</b>	<b>\$15.15</b>	<b>200GTFEP</b>	<b>16.50</b>
2½"	<b>250-G-TF</b>	<b>24.50</b>	<b>250GTFVI</b>	<b>46.45</b>	---	--	---	--
3"	<b>300-G-TF</b>	<b>18.70</b>	<b>300GTFVI</b>	<b>41.50</b>	<b>300GTFWB</b>	<b>20.70</b>	<b>300GTFEP</b>	<b>20.40</b>
4"	<b>400-G-TF</b>	<b>30.00</b>	<b>400GTFVI</b>	<b>65.40</b>	<b>400GTFWB</b>	<b>39.30</b>	---	--
5"	---	--	---	--	<b>500GTFWB</b>	<b>70.00</b>	---	--
6"	<b>600-G-TF</b>	<b>75.40</b>	<b>600GTFVI</b>	<b>120.00</b>	---	--	---	--

### Encapsulated



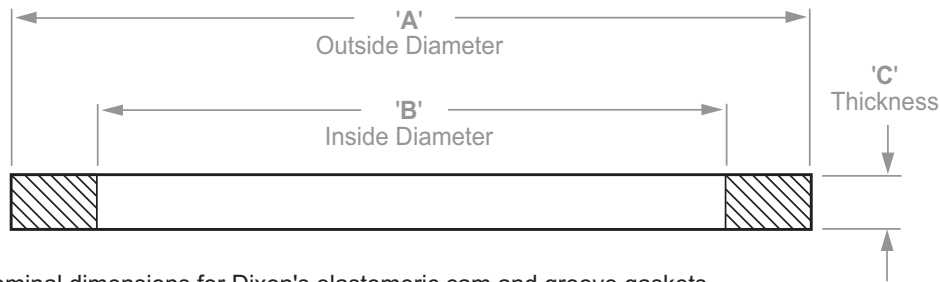
Size	Teflon® encapsulated silicone		Teflon® encapsulated Viton®	
	Part #	Price	Part #	Price
½"	---	--	---	--
¾"	<b>75-G-TES</b>	<b>\$33.00</b>	<b>75-G-TEV</b>	<b>\$50.00</b>
1"	<b>100-G-TES</b>	<b>33.00</b>	<b>100-G-TEV</b>	<b>49.60</b>
1¼"	<b>125-G-TES</b>	<b>37.75</b>	<b>125-G-TEV</b>	<b>55.00</b>
1½"	<b>150-G-TES</b>	<b>38.30</b>	<b>150-G-TEV</b>	<b>59.00</b>
2"	<b>200-G-TES</b>	<b>40.00</b>	<b>200-G-TEV</b>	<b>60.60</b>
2½"	<b>250-G-TES</b>	<b>48.20</b>	<b>250-G-TEV</b>	<b>76.95</b>
3"	<b>300-G-TES</b>	<b>55.00</b>	<b>300-G-TEV</b>	<b>83.50</b>
4"	<b>400-G-TES</b>	<b>74.00</b>	<b>400-G-TEV</b>	<b>121.00</b>
5"	---	--	---	--
6"	---	--	---	--

### Accordion



Size	Teflon® accordion	
	Part #	Price
½"	---	--
¾"	<b>75GTFACC</b>	<b>\$14.80</b>
1"	<b>100GTFACC</b>	<b>15.70</b>
1¼"	<b>125GTFACC</b>	<b>20.90</b>
1½"	<b>150GTFACC</b>	<b>19.00</b>
2"	<b>200GTFACC</b>	<b>22.00</b>
2½"	---	--
3"	<b>300GTFACC</b>	<b>48.00</b>
4"	---	--
5"	---	--
6"	---	--

## Dixon Cam and Groove Gasket Dimensions



- The following are the nominal dimensions for Dixon's elastomeric cam and groove gaskets.
- The ID's of the Teflon® envelope gaskets and the Teflon® accordion gaskets are  $1/16$ " smaller than the ID's for the elastomeric gaskets shown below.
- Thickness of Teflon® accordion gaskets may vary from chart below.

Size	Part #	'A'	'B'	'C'
1/2"	<b>50-G</b> <sup>1</sup>	1-1/32"	11/16"	.156"
3/4"	<b>75-G</b>	1-3/8"	7/8"	.218"
1"	<b>100-G</b>	1-9/16"	1-1/16"	.250"
1 1/4"	<b>125-G</b>	1-15/16"	1-23/64"	.250"
1 1/2"	<b>150-G</b>	2-3/16"	1-5/8"	.250"
2"	<b>200-G</b>	2-5/8"	2"	.250"
2 1/2"	<b>250-G</b>	3-1/8"	2-3/8"	.250"
3"	<b>300-G</b>	3-23/32"	3"	.250"
4"	<b>400-G</b>	4-7/8"	4"	.250"
5"	<b>500-G</b>	5-15/16"	4-7/8"	.250"
6"	<b>600-G</b>	7-1/16"	6"	.250"
8"	<b>800-G</b> <sup>1</sup>	9-5/16"	8-1/8"	.343"

<sup>1</sup> No interchange standard exists for the 1/2" and 8" fittings. Generally, these sizes do not interchange with other manufacturer's products. As such, the gaskets in these sizes are not suitable for use in other manufacturers' couplings. **SAFETY ALERT**

## Dixon Cam and Groove Gasket Color Codes

Gasket Code	Gasket Material	Material Color	Color code stripes (appear on the OD of the gasket or filler)
<b>-BU</b>	Buna-N (standard in all metal fittings)	black	1 blue
<b>-BF</b>	Buna (formulated for fuel service)	black	1 green
<b>-VI</b>	Viton®	black	1 yellow
<b>-THK</b>	Extra Thick Buna	black	2 blue
<b>-EPR</b>	Ethylene Propylene	black	1 white
<b>-NE</b>	Neoprene	black	1 red
<b>-WNE</b>	White Neoprene, FDA approved material	white	none
<b>-WB</b>	White Buna N, FDA approved material	white	blue
<b>-SIL</b>	Silicone	red	none
<b>-TF</b>	Teflon® (TFE) Envelope with Buna-N filler	white / black	1 blue
<b>TFVI</b>	Teflon® (TFE) Envelope with Viton® filler	white / black	1 yellow
<b>TFWB</b>	Teflon® (TFE) Envelope with White Buna-N filler, FDA approved materials	white / white	blue
<b>TFEP</b>	Teflon® (TFE) Envelope with Ethylene Propylene filler	white / black	1 white stripe
<b>-TES</b>	Teflon® (FEP) Encapsulated Silicone core, FDA approved materials	translucent / red	none
<b>-TEV</b>	Teflon® (FEP) Encapsulated Viton® core	translucent / black	none
<b>TFACC</b>	Teflon® (TFE) Accordion, FDA approved materials	white	none

**SAFETY**  
ALERT

Since other manufacturer's coding systems vary, this chart should not be used as a reference in identifying gaskets of unknown origin.